
Standard Structural Shapes *Profiles Formes Standard*



25 Bonnell Street / P.O. Box 428

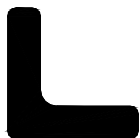
Newnan, Georgia 30263

Phone: (770) 253-2020

Fax: (800) 846-8885

Index

Angles



Equal Angles - American Std Structural Profiles
Equal Angles - Structural Profiles
Unequal Angles - American Std Structural Profiles
Unequal Angles - Structural Profiles

Cornières

Ailettes Égales - Modèle Americain
Ailettes Égales - Structuraux
Ailettes Inégales - Modèle Americain
Ailettes Inégales - Structuraux

Channels

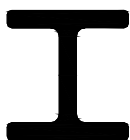


Aluminum Association Standard Structural
American Standard Structural
Equal Thickness
Unequal Legs

Profilés En U

Homologués "Aluminum Association"
Structuraux Homologués - Modèle Americain
Épaisseur Uniforme
Ailettes Inégales

I-Beams



Aluminum Association Standard Structural
American Standard
American Standard H-Beams
Miscellaneous
Miscellaneous Tapered Flange

Profilés en I

Homologués "Aluminum Association"
Modèle Americain
Poutrelle en Forme de "H" - Modèle Americain
Divers
Ailettes Effilées - Divers

Rectangular Bar



Full Round Ends

Profilés Rectangulaires

Chants Ronds

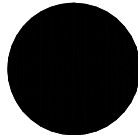
Index

Rectangular Tubes



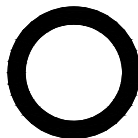
Tubes Rectangulaires

Round Rod



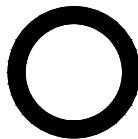
Barres Rondes

Round Tube



Tubes Ronds

Schedule Pipe



Tuyaux

Split Tubes



Profilés pour Emboîtements

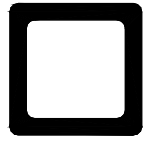
Square Bar



Barres Carrés

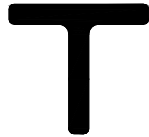
Index

Square Tubes



Tubes Carrés

Tees

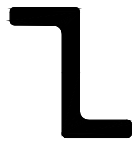


Profilés En T

Miscellaneous

Divers

Zees



Profilés En Z

American Standard
Miscellaneous

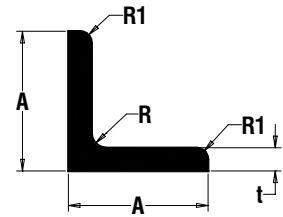
Modèle Américain
Divers

Angles

Equal Angles - American Std Structural Profiles

Cornières

Ailettes Égales - Modèle Américain



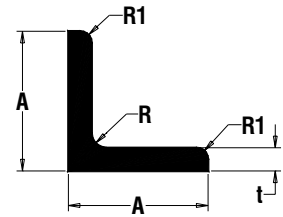
| <i>A</i> | <i>t</i> | <i>R</i> | <i>RI</i> | <i>kg/m</i> | <i>Die Location</i> | <i>Bonnell Part #</i> |
|----------|----------|----------|-----------|-------------|---------------------|-----------------------|
| 38.10 | 6.35 | 4.78 | 3.18 | 1.204 | C | 121012 |
| 50.80 | 3.18 | 6.35 | 3.18 | 0.859 | C | 121017 |
| 101.60 | 9.53 | 9.53 | 6.35 | 5.009 | CN | 121039 |
| 127.00 | 9.53 | 12.70 | 9.53 | 6.305 | N | 121046 |
| 152.40 | 9.53 | 12.70 | 9.53 | 7.618 | C | 121050 |

Angles

Equal Angles - Structural Profiles

Cornières

Ailettes Égales - Structuraux



| A | t | R | RI | kg/m | Die Location | Bonnell Part # |
|-------|------|------|------|-------|--------------|----------------|
| 12.70 | 1.27 | | | 0.083 | N | 123003 |
| 12.70 | 1.57 | | | 0.100 | CN | 123004 |
| 12.70 | 3.18 | | | 0.189 | CN | 123006 |
| 15.88 | 1.27 | | | 0.107 | C | 123007 |
| 15.88 | 1.57 | | | | N | 123008 |
| 15.88 | 3.18 | | | 0.246 | CN | 123009 |
| 19.05 | 1.17 | | | 0.119 | N | 123011 |
| 19.05 | 1.27 | | | 0.131 | CN | 123012 |
| 19.05 | 1.40 | | | 0.141 | N | 123013 |
| 19.05 | 1.57 | | | 0.155 | CKN | 123014 |
| 19.05 | 1.91 | | | 0.188 | C | 123015 |
| 19.05 | 2.36 | | | 0.235 | N | 123016 |
| 19.05 | 3.18 | 3.18 | 3.18 | 0.302 | C | 123019 |
| 22.23 | 1.27 | | | 0.152 | N | 123023 |
| 22.23 | 3.18 | | | 0.363 | N | 123024 |
| 25.40 | 1.27 | | | 0.173 | CN | 123028 |
| 25.40 | 1.57 | | | 0.217 | CKN | 123029 |
| 25.40 | 2.36 | | | | CN | 123030 |
| 25.40 | 2.39 | 4.78 | 2.39 | 0.327 | N | 123031 |
| 25.40 | 3.18 | | | 0.408 | CN | 123032 |
| 25.40 | 3.18 | 3.18 | 3.18 | 0.412 | C | 123033 |
| 25.40 | 4.75 | | | | N | 123036 |
| 25.40 | 4.78 | 4.78 | 4.78 | 0.595 | N | 123038 |
| 25.40 | 6.35 | | | 0.762 | N | 123039 |
| 31.75 | 1.57 | | | 0.269 | N | 123046 |
| 31.75 | 2.03 | | | 0.345 | C | 123161 |
| 31.75 | 3.18 | | | 0.516 | CKN | 123048 |
| 31.75 | 3.18 | 3.18 | 3.18 | 0.525 | C | 123050 |
| 31.75 | 4.75 | | | 0.749 | C | 123051 |
| 31.75 | 4.78 | 4.78 | 4.78 | 0.762 | C | 123053 |
| 31.75 | 6.17 | | | 0.981 | KN | 123054 |
| 31.75 | 6.35 | | | 0.982 | N | 123055 |
| 31.75 | 6.35 | 6.35 | 6.35 | 0.981 | C | 123057 |
| 31.75 | 7.92 | | | 1.220 | N | 123058 |
| 34.93 | 1.57 | | | 0.296 | N | 123060 |
| 34.93 | 3.18 | | | 0.586 | C | 123061 |
| 38.10 | 1.57 | | | 0.310 | CN | 123064 |
| 38.10 | 2.36 | | | | C | 123066 |
| 38.10 | 3.18 | | | 0.624 | CKN | 123067 |
| 38.10 | 3.18 | 3.18 | 3.18 | | CN | 123069 |
| 38.10 | 4.75 | | | 0.939 | N | 123070 |
| 38.10 | 4.75 | 0.79 | 4.75 | 0.912 | CN | 123071 |
| 38.10 | 4.75 | 4.75 | 4.75 | 0.927 | C | 123073 |
| 38.10 | 6.35 | | | 1.198 | C | 123075 |
| 41.28 | 9.53 | | | 1.926 | N | 123080 |
| 42.88 | 1.57 | | | 0.366 | C | 123081 |
| 44.45 | 3.18 | | | | C | 123082 |
| 44.45 | 6.35 | | | 1.429 | CN | 123087 |

C = Carthage, Tn / K = Kentland, IN / N = Newnan, GA

Angles Page 2

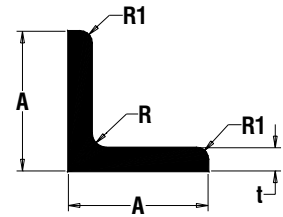
10-Aug-09

Angles

Equal Angles - Structural Profiles

Cornières

Ailettes Égales - Structuraux



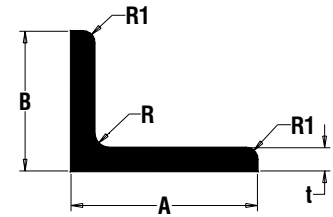
| <i>A</i> | <i>t</i> | <i>R</i> | <i>RI</i> | <i>kg/m</i> | <i>Die Location</i> | <i>Bonnell Part #</i> |
|----------|----------|----------|-----------|-------------|---------------------|-----------------------|
| 44.45 | 6.35 | 6.35 | 6.35 | 1.427 | C | 123089 |
| 50.80 | 1.57 | | | 0.436 | CN | 123092 |
| 50.80 | 3.18 | | | 0.827 | CKN | 123096 |
| 50.80 | 3.18 | 3.18 | 3.18 | 0.859 | C | 123098 |
| 50.80 | 3.96 | | | 1.071 | N | 123100 |
| 50.80 | 4.75 | | | 1.272 | CN | 123101 |
| 50.80 | 4.75 | 4.75 | 4.75 | 1.257 | C | 123103 |
| 50.80 | 6.35 | | | 1.674 | CN | 123104 |
| 50.80 | 6.35 | 6.35 | 6.35 | 1.650 | CN | 123108 |
| 50.80 | 9.53 | 9.53 | 9.53 | 2.374 | C | 123111 |
| 63.50 | 1.57 | | | 0.546 | C | 123162 |
| 63.50 | 3.18 | 9.53 | | 1.088 | C | 123115 |
| 63.50 | 4.75 | 4.75 | | 1.588 | C | 123117 |
| 63.50 | 6.35 | 6.35 | 6.35 | 2.098 | C | 123121 |
| 63.50 | 9.53 | 9.53 | 9.53 | 3.043 | C | 123124 |
| 76.20 | 3.18 | | | 1.280 | CN | 123127 |
| 76.20 | 4.75 | | | 1.941 | CN | 123128 |
| 76.20 | 6.35 | | | 2.514 | CN | 123129 |
| 76.20 | 6.35 | 6.35 | 6.35 | 2.543 | CN | 123131 |
| 76.20 | 9.53 | 9.53 | 9.53 | 3.713 | C | 123137 |
| 101.60 | 2.39 | 3.18 | | 1.327 | C | 123145 |
| 101.60 | 6.35 | 6.35 | 6.35 | 3.436 | C | 123149 |
| 152.40 | 12.70 | | | 10.099 | C | 123160 |

Angles

Unequal Angles - American Std Structural Profiles

Cornières

Ailettes Inégales - Modèle Americain



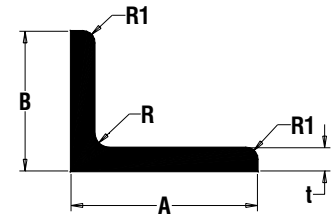
| <i>A</i> | <i>B</i> | <i>t</i> | <i>R</i> | <i>R1</i> | <i>kg/m</i> | <i>Die Location</i> | <i>Bonnell Part #</i> |
|----------|----------|----------|----------|-----------|-------------|---------------------|-----------------------|
| 50.80 | 38.10 | 3.18 | 4.78 | 3.18 | 0.738 | C | 122013 |
| 50.80 | 38.10 | 4.78 | 4.78 | 3.18 | 1.088 | C | 122014 |
| 63.50 | 50.80 | 6.35 | 6.35 | 3.18 | 1.871 | CN | 122022 |
| 101.60 | 76.20 | 9.53 | 9.53 | 6.35 | 4.354 | C | 122043 |
| 152.40 | 101.60 | 9.53 | 12.70 | 9.53 | 6.305 | C | 122059 |

Angles

Unequal Angles - Structural Profiles

Cornières

Ailettes Inégales - Structuraux



| A | B | t | R | RI | kg/m | Die Location | Bonnell Part # |
|-------|-------|------|---|----|-------|--------------|----------------|
| 12.70 | 6.35 | 1.57 | | | 0.077 | N | 124001 |
| 12.70 | 9.53 | 1.57 | | | | CN | 124003 |
| 15.88 | 9.53 | 1.60 | | | 0.106 | CN | 124004 |
| 15.88 | 12.70 | 1.57 | | | 0.109 | C | 124005 |
| 19.05 | 7.92 | 1.27 | | | 0.091 | N | 124008 |
| 19.05 | 9.53 | 3.18 | | | 0.223 | N | 124010 |
| 19.05 | 12.70 | 1.57 | | | 0.128 | CN | 124011 |
| 19.05 | 12.70 | 3.18 | | | 0.244 | N | 124012 |
| 19.05 | 15.88 | 3.18 | | | | C | 124013 |
| 22.23 | 9.53 | 1.57 | | | 0.128 | N | 124014 |
| 22.23 | 15.88 | 3.18 | | | 0.307 | N | 124016 |
| 23.80 | 7.92 | 1.57 | | | 0.131 | N | 124017 |
| 25.40 | 6.35 | 1.57 | | | 0.132 | CN | 124018 |
| 25.40 | 12.70 | 1.57 | | | 0.155 | CKN | 124022 |
| 25.40 | 12.70 | 2.39 | | | 0.235 | CN | 124023 |
| 25.40 | 12.70 | 3.18 | | | 0.301 | C | 124024 |
| 25.40 | 15.88 | 3.18 | | | 0.336 | CN | 124025 |
| 25.40 | 19.05 | 1.27 | | | 0.152 | C | 124026 |
| 25.40 | 19.05 | 1.57 | | | 0.186 | C | 124027 |
| 25.40 | 19.05 | 3.18 | | | 0.354 | CN | 124028 |
| 26.97 | 15.88 | 1.40 | | | 0.159 | N | 124033 |
| 27.00 | 19.05 | 3.18 | | | 0.377 | N | 124034 |
| 31.75 | 12.70 | 3.18 | | | 0.362 | N | 124038 |
| 31.75 | 19.05 | 1.60 | | | 0.217 | CN | 124039 |
| 31.75 | 19.05 | 3.18 | | | 0.408 | C | 124040 |
| 31.75 | 25.40 | 1.57 | | | 0.237 | C | 124041 |
| 31.75 | 25.40 | 3.18 | | | 0.463 | CN | 124042 |
| 37.29 | 25.40 | 2.39 | | | 0.399 | N | 124046 |
| 38.10 | 9.53 | 1.60 | | | 0.204 | N | 124047 |
| 38.10 | 12.70 | 1.57 | | | 0.214 | CN | 124048 |
| 38.10 | 12.70 | 3.18 | | | 0.399 | C | 124050 |
| 38.10 | 19.05 | 1.57 | | | 0.237 | C | 124051 |
| 38.10 | 19.05 | 3.18 | | | 0.464 | CN | 124054 |
| 38.10 | 25.40 | 1.57 | | | 0.262 | CKN | 124060 |
| 38.10 | 25.40 | 2.36 | | | 0.400 | KN | 124063 |
| 38.10 | 25.40 | 3.18 | | | 0.531 | CKN | 124064 |
| 38.10 | 31.75 | 1.14 | | | 0.217 | C | 124071 |
| 39.67 | 12.70 | 1.57 | | | 0.222 | K | 124074 |
| 44.45 | 19.05 | 2.39 | | | 0.405 | N | 124077 |
| 44.45 | 22.23 | 1.57 | | | 0.284 | C | 124079 |
| 44.45 | 23.80 | 1.27 | | | 0.235 | C | 124080 |
| 44.45 | 28.58 | 2.39 | | | 0.466 | N | 124081 |
| 44.45 | 38.10 | 3.18 | | | 0.696 | C | 124088 |
| 44.45 | 41.28 | 4.78 | | | 1.068 | N | 124089 |
| 50.80 | 12.70 | 3.18 | | | 0.530 | K | 124094 |
| 50.80 | 15.88 | 3.18 | | | 0.560 | N | 124095 |
| 50.80 | 19.05 | 2.39 | | | 0.445 | CN | 124097 |
| 50.80 | 25.40 | 1.27 | | | 0.262 | N | 124098 |

C = Carthage, Tn / K = Kentland, IN / N = Newnan, GA

Angles Page 5

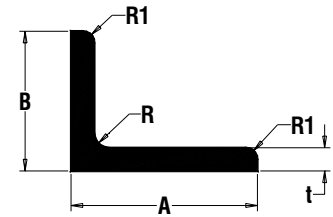
10-Aug-09

Angles

Unequal Angles - Structural Profiles

Cornières

Ailettes Inégales - Structuraux



| A | B | t | R | RI | kg/m | Die Location | Bonnell Part # |
|--------|-------|------|------|------|-------|--------------|----------------|
| 50.80 | 25.40 | 1.57 | | | 0.324 | CN | 124099 |
| 50.80 | 25.40 | 2.36 | | | 0.490 | N | 124101 |
| 50.80 | 25.40 | 3.18 | | | 0.638 | CKN | 124103 |
| 50.80 | 31.75 | 1.57 | | | 0.335 | C | 124108 |
| 50.80 | 31.75 | 3.18 | | | 0.698 | C | 124110 |
| 50.80 | 38.10 | 2.36 | | | 0.566 | N | 124112 |
| 50.80 | 38.10 | 3.18 | | | 0.737 | CN | 124113 |
| 50.80 | 38.10 | 4.75 | | | | CN | 124116 |
| 50.80 | 41.28 | 2.03 | | | 0.506 | K | 124120 |
| 50.80 | 44.45 | 2.39 | | | 0.615 | CN | 124121 |
| 55.55 | 28.58 | 1.57 | | | 0.359 | N | 124124 |
| 57.15 | 25.40 | 3.18 | | | 0.696 | CN | 124126 |
| 57.15 | 50.80 | 1.57 | | | 0.463 | CN | 124127 |
| 63.50 | 12.70 | 3.18 | | | 0.641 | N | 124129 |
| 63.50 | 25.40 | 3.18 | | | 0.753 | N | 124130 |
| 63.50 | 38.10 | 3.18 | | | 0.841 | C | 124133 |
| 63.50 | 38.10 | 4.78 | | | 1.278 | N | 124135 |
| 63.50 | 50.80 | 4.78 | | | 1.448 | CN | 124142 |
| 69.85 | 19.05 | 1.57 | | | 0.379 | N | 124150 |
| 76.20 | 19.05 | 2.90 | | | 0.741 | N | 124154 |
| 76.20 | 25.40 | 3.18 | | | 0.783 | CKN | 124157 |
| 76.20 | 25.40 | 6.35 | | | 1.673 | N | 124159 |
| 76.20 | 38.10 | 1.57 | | | 0.491 | N | 124162 |
| 76.20 | 38.10 | 2.36 | | | 0.732 | N | 124163 |
| 76.20 | 38.10 | 3.18 | | | 0.954 | C | 124164 |
| 76.20 | 44.45 | 2.39 | | | 0.780 | N | 124167 |
| 76.20 | 50.80 | 3.18 | | | 1.063 | CN | 124170 |
| 76.20 | 50.80 | 4.75 | | | 1.569 | C | 124171 |
| 76.20 | 50.80 | 4.78 | 4.78 | 4.78 | 1.603 | C | 124173 |
| 76.20 | 50.80 | 6.35 | | | 2.077 | CN | 124175 |
| 76.20 | 50.80 | 6.35 | 6.35 | 6.35 | 2.097 | CN | 124176 |
| 76.20 | 50.80 | 9.53 | 9.53 | 9.53 | 3.043 | C | 124179 |
| 76.20 | 63.50 | 6.35 | 6.35 | 6.35 | 2.320 | C | 124182 |
| 88.90 | 25.40 | 3.18 | | | 0.976 | C | 124189 |
| 88.90 | 31.75 | 1.57 | | | 0.518 | C | 124190 |
| 88.90 | 31.75 | 3.18 | | | 1.033 | N | 124191 |
| 88.90 | 50.80 | 3.18 | | | 1.205 | C | 124193 |
| 88.90 | 63.50 | 6.35 | 6.35 | 6.35 | 2.561 | C | 124196 |
| 95.25 | 31.75 | 6.35 | | | 2.122 | N | 124203 |
| 101.60 | 25.40 | 3.18 | | | 1.063 | C | 124206 |
| 101.60 | 38.10 | 3.18 | | | 1.199 | N | 124208 |
| 101.60 | 38.10 | 4.78 | | | 1.783 | C | 124209 |
| 101.60 | 50.80 | 3.18 | | | 1.286 | N | 124211 |
| 101.60 | 50.80 | 6.35 | | | 2.499 | C | 124213 |
| 101.60 | 76.20 | 3.18 | | | 1.534 | C | 124215 |
| 101.60 | 76.20 | 6.35 | | | 2.505 | C | 124217 |
| 101.60 | 76.20 | 6.35 | 6.35 | 6.35 | 2.990 | C | 124218 |
| 101.60 | 76.20 | 9.53 | | | 4.436 | CN | 124221 |

C = Carthage, Tn / K = Kentland, IN / N = Newnan, GA

Angles Page 6

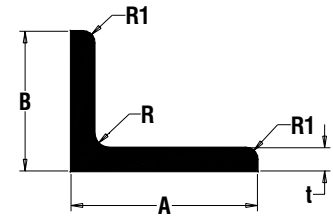
10-Aug-09

Angles

Unequal Angles - Structural Profiles

Cornières

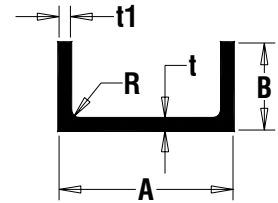
Ailettes Inégales - Structuraux



| <i>A</i> | <i>B</i> | <i>t</i> | <i>R</i> | <i>R1</i> | <i>kg/m</i> | <i>Die Location</i> | <i>Bonnell Part #</i> |
|----------|----------|----------|----------|-----------|-------------|---------------------|-----------------------|
| 101.60 | 76.20 | 9.53 | 9.53 | 9.53 | 4.383 | C | 124222 |
| 101.60 | 76.20 | 12.70 | 12.70 | 12.70 | 5.707 | C | 124224 |
| 117.48 | 47.63 | 12.70 | | | 5.357 | C | 124228 |
| 127.00 | 38.10 | 3.18 | | | 1.421 | N | 124231 |
| 127.00 | 50.80 | 3.18 | | | 1.534 | KN | 124232 |
| 127.00 | 76.20 | 9.53 | 9.53 | 9.53 | 5.052 | C | 124236 |
| 152.40 | 76.20 | 6.35 | | | 3.905 | C | 124244 |
| 165.10 | 25.40 | 1.98 | | | 1.033 | C | 124253 |
| 177.80 | 76.20 | 2.79 | | | 1.944 | C | 124254 |

Channels

Aluminum Association Standard Structural
Profils En U
Homologués "Aluminum Association"



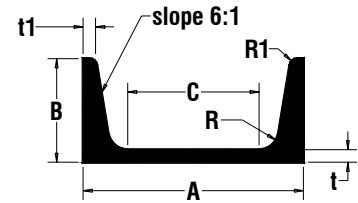
| <i>A</i> | <i>B</i> | <i>t</i> | <i>t1</i> | <i>R</i> | <i>kg/m</i> | <i>Die Location</i> | <i>Bonnell Part #</i> |
|----------|----------|----------|-----------|----------|-------------|---------------------|-----------------------|
| 76.20 | 38.10 | 5.08 | 3.30 | 6.35 | 1.689 | CK | 101003 |
| 101.60 | 50.80 | 5.84 | 3.81 | 6.35 | 2.586 | CN | 101005 |
| 203.20 | 76.20 | 8.89 | 4.83 | 7.62 | 6.171 | C | 101013 |

Channels

American Standard Structural

Profils En U

Structuraux Homologués - Modèle Américain



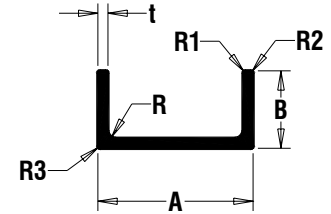
| <i>A</i> | <i>B</i> | <i>C</i> | <i>t</i> | <i>t1</i> | <i>R</i> | <i>R1</i> | <i>kg/m</i> | <i>Die Location</i> | <i>Bonnell Part #</i> |
|----------|----------|----------|----------|-----------|----------|-----------|-------------|---------------------|-----------------------|
| 76.20 | 35.81 | 44.45 | 4.32 | 4.32 | 6.86 | 2.54 | 2.109 | CKN | 102001 |
| 76.20 | 38.05 | 44.45 | 6.55 | 4.32 | 6.86 | 2.54 | 2.573 | C | 102002 |
| 76.20 | 40.54 | 44.45 | 9.04 | 4.32 | 6.86 | 2.54 | 3.086 | CN | 102003 |
| 101.60 | 40.13 | 69.85 | 4.57 | 4.57 | 7.11 | 2.79 | 2.747 | C | 102004 |
| 101.60 | 41.83 | 69.85 | 6.27 | 4.57 | 7.11 | 2.79 | 3.216 | C | 102005 |
| 101.60 | 43.69 | 69.85 | 8.13 | 4.57 | 7.11 | 2.79 | 3.726 | CN | 102006 |
| 127.00 | 44.45 | 95.25 | 4.83 | 4.83 | 7.37 | 2.79 | 3.447 | C | 102007 |
| 152.40 | 49.40 | 114.30 | 5.72 | 5.08 | 7.62 | 3.05 | 4.467 | C | 102011 |

Channels

Equal Thickness

Profils En U

Épaisseur Uniforme



| A | B | t | R | R1 | R2 | R3 | kg/m | Die Location | Bonnell Part # |
|-------|-------|------|------|------|------|------|-------|--------------|----------------|
| 7.90 | 23.80 | 1.57 | | | | | 0.229 | N | 103003 |
| 9.50 | 15.88 | 1.57 | | | | | 0.167 | N | 103006 |
| 9.53 | 7.92 | 1.57 | | | | | 0.097 | N | 103007 |
| 9.53 | 9.53 | 1.57 | | | | | 0.109 | N | 103008 |
| 9.98 | 23.83 | 1.60 | | | | | 0.241 | N | 103010 |
| 12.70 | 7.92 | 1.60 | | | | | 0.112 | N | 103017 |
| 12.70 | 9.53 | 2.36 | | | | | | N | 103019 |
| 12.70 | 12.70 | 1.27 | | | | | 0.125 | CN | 103022 |
| 12.70 | 12.70 | 1.57 | | | | | 0.149 | CKN | 103023 |
| 12.70 | 12.70 | 2.39 | | | | | 0.220 | CN | 103024 |
| 12.70 | 12.70 | 3.18 | | | | | 0.272 | C | 103025 |
| 12.70 | 19.05 | 1.57 | | | | | 0.207 | CN | 103028 |
| 12.70 | 19.05 | 2.39 | | | | | 0.304 | C | 103029 |
| 12.70 | 19.05 | 3.18 | | | | | 0.381 | CN | 103030 |
| 12.70 | 25.40 | 1.57 | | | | | 0.256 | N | 103031 |
| 14.30 | 14.30 | 1.60 | | | | | 0.176 | CN | 103033 |
| 15.88 | 12.70 | 1.57 | | | | | 0.162 | K | 103038 |
| 15.88 | 15.88 | 1.57 | | | | | 0.189 | CN | 103039 |
| 15.88 | 15.88 | 3.18 | | | | | 0.363 | N | 103040 |
| 15.88 | 19.05 | 2.36 | 0.79 | 0.79 | 0.79 | | 0.321 | C | 103041 |
| 17.48 | 14.30 | 1.60 | | | | | 0.189 | N | 103046 |
| 19.05 | 9.53 | 1.57 | | | | | 0.152 | N | 103047 |
| 19.05 | 9.53 | 3.18 | | | | | 0.278 | C | 103048 |
| 19.05 | 12.70 | 1.57 | | | | | 0.176 | CN | 103049 |
| 19.05 | 12.70 | 2.39 | | | | | 0.262 | C | 103050 |
| 19.05 | 12.70 | 3.18 | | | | | 0.335 | N | 103051 |
| 19.05 | 19.05 | 1.57 | | | | | 0.231 | CN | 103056 |
| 19.05 | 19.05 | 1.98 | | | | | 0.292 | C | 103057 |
| 19.05 | 19.05 | 3.18 | | | | | 0.436 | N | 103060 |
| 19.05 | 20.62 | 1.57 | | | | | 0.250 | CN | 103061 |
| 19.05 | 25.40 | 3.18 | | | | | 0.558 | CN | 103063 |
| 19.05 | 28.58 | 3.18 | | | | | 0.615 | N | 103064 |
| 19.05 | 38.10 | 3.18 | | | | | 0.783 | CN | 103066 |
| 19.96 | 14.22 | 1.52 | | | | | 0.189 | K | 103067 |
| 21.89 | 11.73 | 1.57 | | | 1.57 | 1.57 | 0.179 | C | 103069 |
| 22.20 | 7.92 | 1.57 | | | | | 0.153 | N | 103070 |
| 22.20 | 15.88 | 1.57 | | | | | 0.222 | N | 103071 |
| 22.23 | 12.70 | 1.57 | | | | | 0.195 | N | 103074 |
| 22.23 | 19.05 | 1.57 | | | 0.79 | | 0.250 | CN | 103075 |
| 23.77 | 19.05 | 1.57 | | | | | 0.256 | C | 103080 |
| 23.80 | 7.92 | 1.57 | | | | | 0.159 | N | 103081 |
| 25.37 | 7.92 | 1.57 | | | | | 0.167 | N | 103082 |
| 25.40 | 12.70 | 1.57 | 1.57 | | | | 0.207 | N | 103084 |
| 25.40 | 12.70 | 2.39 | | | | | 0.304 | N | 103085 |
| 25.40 | 12.70 | 3.18 | | | | | 0.384 | N | 103086 |
| 25.40 | 15.88 | 3.18 | | | | | 0.446 | N | 103087 |
| 25.40 | 19.05 | 3.18 | | | | | 0.490 | CN | 103088 |
| 25.40 | 22.23 | 3.18 | | | | | 0.557 | C | 103089 |

C = Carthage, Tn / K = Kentland, IN / N = Newnan, GA

Channels Page 3

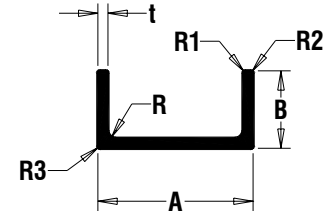
10-Aug-09

Channels

Equal Thickness

Profils En U

Épaisseur Uniforme



| A | B | t | R | R1 | R2 | R3 | kg/m | Die Location | Bonnell Part # |
|-------|-------|-------|------|------|------|------|-------|--------------|----------------|
| 25.40 | 25.40 | 1.57 | | | | | 0.318 | N | 103090 |
| 25.40 | 25.40 | 3.18 | | | | | 0.603 | CN | 103092 |
| 25.40 | 38.10 | 3.18 | | | | | 0.838 | N | 103094 |
| 25.40 | 44.45 | 3.18 | | | | | 0.948 | N | 103096 |
| 27.00 | 19.05 | 3.18 | | | | | 0.516 | N | 103101 |
| 28.55 | 20.62 | 1.57 | | | | | 0.292 | CN | 103102 |
| 28.58 | 7.92 | 1.57 | | | | | 0.180 | N | 103103 |
| 28.58 | 25.40 | 1.57 | | | | | 0.332 | C | 103106 |
| 29.36 | 22.10 | 1.57 | | | | | 0.307 | N | 103110 |
| 31.75 | 7.92 | 1.57 | | | | | 0.195 | N | 103112 |
| 31.75 | 12.70 | 3.18 | | | | | 0.435 | CN | 103116 |
| 31.75 | 19.05 | 3.18 | | | | | 0.557 | CN | 103119 |
| 31.75 | 22.23 | 2.39 | | | | | 0.472 | N | 103120 |
| 31.75 | 25.40 | 1.57 | | | | | 0.347 | N | 103122 |
| 31.75 | 31.75 | 3.18 | | | | | 0.762 | CN | 103124 |
| 34.93 | 7.92 | 1.57 | | | | | 0.207 | N | 103127 |
| 34.93 | 38.10 | 3.18 | | | | | 0.921 | N | 103130 |
| 38.10 | 6.35 | 1.27 | | | | | 0.167 | N | 103134 |
| 38.10 | 12.70 | 1.27 | | | | | 0.214 | N | 103135 |
| 38.10 | 12.70 | 1.57 | | | | | 0.265 | C | 103136 |
| 38.10 | 12.70 | 3.18 | | | | | 0.500 | C | 103138 |
| 38.10 | 19.05 | 3.18 | | | | | 0.589 | CN | 103140 |
| 38.10 | 22.23 | 3.18 | | | | | 0.670 | C | 103143 |
| 38.10 | 25.40 | 3.18 | | | | | 0.708 | N | 103144 |
| 38.10 | 31.75 | 3.18 | | | | | 0.838 | N | 103148 |
| 38.10 | 38.10 | 1.57 | | | | | 0.484 | CN | 103149 |
| 38.10 | 38.10 | 2.36 | | | | | 0.716 | C | 103150 |
| 38.10 | 38.10 | 3.18 | | | | | 0.929 | CN | 103151 |
| 38.10 | 38.10 | 4.78 | | | | | 1.384 | C | 103152 |
| 39.67 | 25.40 | 23.88 | | | | | 0.566 | CK | 103153 |
| 39.67 | 50.80 | 12.70 | 1.91 | 1.91 | 1.91 | 1.91 | 4.064 | K | 103315 |
| 41.28 | 7.92 | 1.57 | | | | | 0.247 | N | 103154 |
| 44.45 | 12.70 | 2.08 | | | | | 0.378 | C | 103161 |
| 44.45 | 19.05 | 3.18 | | | | | 0.673 | N | 103162 |
| 44.45 | 25.40 | 3.18 | | | | | 0.783 | C | 103164 |
| 44.45 | 44.45 | 3.18 | | | | | | C | 103168 |
| 44.45 | 50.80 | 4.78 | | | | | 1.804 | C | 103169 |
| 44.45 | 50.80 | 6.35 | 0.79 | 0.79 | 0.79 | 0.79 | 2.342 | N | 103170 |
| 47.63 | 38.10 | 3.18 | | | | | 1.033 | N | 103176 |
| 50.80 | 12.70 | 2.39 | | | | | 0.472 | N | 103179 |
| 50.80 | 12.70 | 3.18 | | | | | 0.601 | N | 103180 |
| 50.80 | 19.05 | 3.18 | | | | | 0.723 | C | 103181 |
| 50.80 | 22.23 | 3.18 | | | | | 0.783 | N | 103182 |
| 50.80 | 25.40 | 1.57 | 1.57 | | | | 0.432 | N | 103184 |
| 50.80 | 25.40 | 3.18 | | | | | 0.814 | CKN | 103185 |
| 50.80 | 38.10 | 3.18 | | | | | 1.042 | C | 103190 |
| 50.80 | 38.10 | 3.18 | 3.18 | 3.18 | | | 1.051 | C | 103191 |
| 50.80 | 50.80 | 3.18 | | | | | 1.249 | C | 103192 |

C = Carthage, Tn / K = Kentland, IN / N = Newnan, GA

Channels Page 4

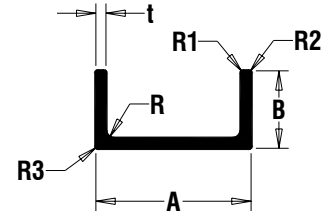
10-Aug-09

Channels

Equal Thickness

Profils En U

Épaisseur Uniforme



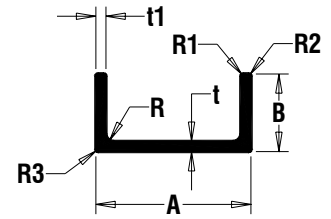
| <i>A</i> | <i>B</i> | <i>t</i> | <i>R</i> | <i>R1</i> | <i>R2</i> | <i>R3</i> | <i>kg/m</i> | <i>Die Location</i> | <i>Bonnell Part #</i> |
|----------|----------|----------|----------|-----------|-----------|-----------|-------------|---------------------|-----------------------|
| 50.80 | 50.80 | 4.78 | | | | | 1.887 | C | 103193 |
| 53.98 | 38.10 | 3.18 | | | | | 1.088 | N | 103199 |
| 57.15 | 22.23 | 3.18 | | | | | 0.838 | C | 103205 |
| 57.15 | 25.40 | 3.18 | | | | | 0.893 | CN | 103206 |
| 57.15 | 76.20 | 1.78 | | | | | 1.012 | N | 103212 |
| 60.33 | 31.75 | 4.78 | 4.78 | | | | 1.537 | C | 103214 |
| 60.33 | 57.15 | 1.57 | 0.79 | | | | 0.749 | N | 103215 |
| 63.50 | 22.23 | 6.35 | 1.57 | | | | 1.677 | C | 103217 |
| 63.50 | 38.10 | 3.18 | | | | | 1.140 | C | 103221 |
| 63.50 | 38.10 | 4.78 | | | | | 1.716 | C | 103222 |
| 63.50 | 82.55 | 3.18 | | | | | 1.952 | C | 103224 |
| 69.85 | 44.45 | 2.79 | | | | | 1.080 | C | 103226 |
| 73.03 | 38.10 | 4.78 | 3.18 | | | | 1.859 | C | 103229 |
| 76.20 | 25.40 | 3.18 | | | | | 1.039 | CN | 103232 |
| 76.20 | 34.93 | 6.35 | | | | | 2.342 | C | 103236 |
| 76.20 | 38.10 | 3.18 | | | | | 1.252 | C | 103237 |
| 76.20 | 38.10 | 4.75 | 3.18 | | | | 1.891 | C | 103239 |
| 82.55 | 44.45 | 3.18 | | | | | 1.396 | C | 103250 |
| 90.93 | 19.05 | 2.29 | | 1.14 | 1.14 | | 0.784 | N | 103252 |
| 101.60 | 25.40 | 3.18 | | | | | 1.249 | N | 103255 |
| 101.60 | 38.10 | 3.18 | | | | | 1.469 | CN | 103258 |
| 114.30 | 25.40 | 3.18 | | | | | 1.394 | N | 103275 |
| 117.50 | 38.10 | 1.40 | | | | | 0.738 | C | 103280 |
| 127.00 | 50.80 | 4.75 | | | | | 2.819 | CN | 103286 |
| 127.00 | 101.60 | 3.18 | | | | | 2.845 | N | 103293 |
| 152.40 | 19.05 | 3.18 | | | | | 1.618 | N | 103296 |
| 152.40 | 76.20 | 3.18 | | | | | 2.622 | C | 103301 |
| 203.20 | 76.20 | 3.18 | | | | | 3.069 | C | 103311 |

Channels

Unequal Legs

Profils En U

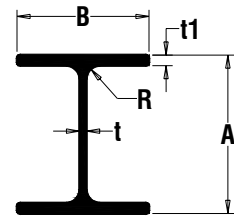
Ailettes Inégales



| <i>A</i> | <i>B</i> | <i>t</i> | <i>t1</i> | <i>R</i> | <i>R1</i> | <i>R2</i> | <i>R3</i> | <i>kg/m</i> | <i>Die Location</i> | <i>Bonnell Part #</i> |
|----------|----------|----------|-----------|----------|-----------|-----------|-----------|-------------|---------------------|-----------------------|
| 69.85 | 19.05 | 1.78 | | | | | 1.02 | 0.516 | N | 105015 |

I-Beams

*Aluminum Association Standard Structural
Profils en I
Homologués "Aluminum Association"*



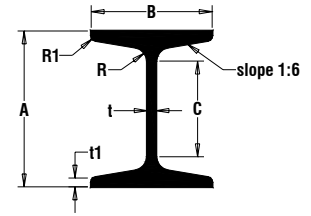
| <i>A</i> | <i>B</i> | <i>t</i> | <i>t1</i> | <i>R</i> | <i>kg/m</i> | <i>Die Location</i> | <i>Bonnell Part #</i> |
|----------|----------|----------|-----------|----------|-------------|---------------------|-----------------------|
| 101.60 | 76.20 | 3.81 | 5.84 | 6.35 | 3.439 | C | 111003 |
| 127.00 | 88.90 | 4.83 | 8.13 | 7.62 | 5.506 | CN | 111005 |
| 152.40 | 101.60 | 4.83 | 7.37 | 7.62 | 5.997 | C | 111006 |
| 152.40 | 101.60 | 5.33 | 8.89 | 7.62 | 6.982 | C | 111007 |

I-Beams

American Standard

Profilés en I

Modèle Americain



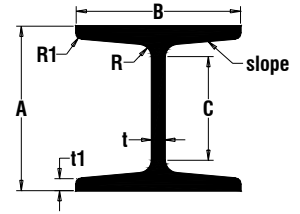
| <i>A</i> | <i>B</i> | <i>C</i> | <i>t</i> | <i>t1</i> | <i>R</i> | <i>R1</i> | <i>kg/m</i> | <i>Die Location</i> | <i>Bonnell Part #</i> |
|-----------------|-----------------|-----------------|-----------------|------------------|-----------------|------------------|--------------------|----------------------------|------------------------------|
| 76.20 | 59.18 | 44.45 | 4.32 | 4.32 | 6.86 | 2.54 | 2.921 | N | 113001 |
| 76.20 | 63.73 | 44.45 | 8.86 | 4.32 | 6.86 | 2.54 | 3.856 | C | 113002 |
| 101.60 | 67.56 | 69.85 | 4.83 | 4.83 | 7.37 | 2.79 | 3.936 | C | 113003 |
| 127.00 | 76.20 | 88.90 | 5.33 | 5.33 | 7.87 | 3.30 | 5.104 | C | 113005 |

I-Beams

American Standard H-Beams

Profilés en I

Poutrelle en Forme de "H" - Modèle Americain



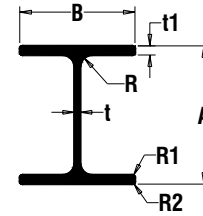
| <i>A</i> | <i>B</i> | <i>C</i> | <i>t</i> | <i>t1</i> | <i>R</i> | <i>R1</i> | <i>slope</i> | <i>kg/m</i> | <i>Die Location</i> | <i>Bonnell Part #</i> |
|----------|----------|----------|----------|-----------|----------|-----------|--------------|-------------|---------------------|-----------------------|
| 101.60 | 101.60 | 60.33 | 7.95 | 7.37 | 7.92 | 3.68 | 287.02 | 7.081 | C | 112001 |

I-Beams

Miscellaneous

Profilés en I

Divers



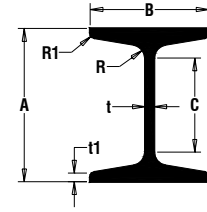
| <i>A</i> | <i>B</i> | <i>t</i> | <i>t1</i> | <i>R</i> | <i>R1</i> | <i>R2</i> | <i>kg/m</i> | <i>Die Location</i> | <i>Bonnell Part #</i> |
|----------|----------|----------|-----------|----------|-----------|-----------|-------------|---------------------|-----------------------|
| 101.60 | 63.50 | 3.18 | 3.18 | | | | 1.954 | N | 116015 |
| 101.60 | 66.68 | | 4.78 | 4.78 | 4.78 | 3.18 | 3.009 | C | 116016 |
| 101.60 | 76.20 | | 5.33 | 3.43 | 2.36 | 0.79 | 3.124 | C | 116018 |

I-Beams

Miscellaneous Tapered Flange

Profilés en I

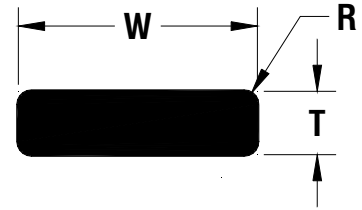
Ailettes Effilées - Divers



| <i>A</i> | <i>B</i> | <i>C</i> | <i>t</i> | <i>t1</i> | <i>R</i> | <i>R1</i> | <i>kg/m</i> | <i>Die Location</i> | <i>Bonnell Part #</i> |
|----------|----------|----------|----------|-----------|----------|-----------|-------------|---------------------|-----------------------|
| 63.50 | 50.80 | | 3.18 | 3.18 | 3.18 | 3.96 | 1.387 | C | 115002 |
| 190.50 | 76.20 | | 2.39 | 3.18 | 4.78 | 1.60 | 2.598 | C | 115003 |
| 203.20 | 76.20 | | 11.51 | 11.51 | 12.70 | 1.57 | 10.965 | C | 115004 |

Rectangular Bar

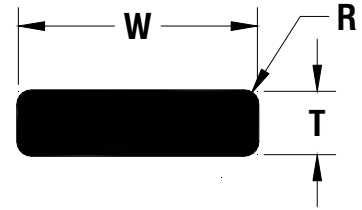
Profilés Rectangulaires



| <i>W</i> | <i>T</i> | <i>R</i> | <i>kg/m</i> | <i>Die Location</i> | <i>Bonnell Part #</i> |
|----------|----------|----------|-------------|---------------------|-----------------------|
| 9.53 | 2.29 | | 0.061 | N | 161005 |
| 9.53 | 3.18 | | 0.083 | CK | 161006 |
| 9.53 | 4.78 | | 0.125 | N | 161007 |
| 9.53 | 6.35 | | 0.168 | C | 161008 |
| 12.70 | 1.60 | | 0.057 | N | 161017 |
| 12.70 | 2.29 | | 0.080 | N | 161018 |
| 12.70 | 2.92 | | 0.101 | CN | 161020 |
| 12.70 | 3.18 | | 0.100 | C | 161021 |
| 12.70 | 3.18 | 0.79 | 0.110 | CK | 161022 |
| 12.70 | 4.45 | | 0.155 | N | 161024 |
| 12.70 | 4.75 | | 0.146 | CN | 161025 |
| 12.70 | 6.35 | | 0.217 | C | 161027 |
| 12.70 | 7.92 | | 0.269 | N | 161028 |
| 12.70 | 9.53 | | 0.329 | C | 161029 |
| 15.88 | 1.57 | | 0.070 | N | 161463 |
| 15.88 | 2.11 | 0.79 | 0.091 | CK | 161034 |
| 15.88 | 3.18 | | 0.137 | CN | 161036 |
| 15.88 | 4.75 | | 0.204 | CN | 161038 |
| 15.88 | 9.53 | | 0.408 | C | 161044 |
| 19.05 | 1.57 | | 0.082 | CN | 161050 |
| 19.05 | 3.18 | | 0.162 | CN | 161052 |
| 19.05 | 4.75 | | 0.246 | CN | 161053 |
| 19.05 | 6.35 | | 0.333 | N | 161055 |
| 19.05 | 12.70 | | 0.649 | CK | 161059 |
| 22.23 | 5.94 | | 0.365 | N | 161068 |
| 23.83 | 1.57 | | 0.104 | N | 161074 |
| 25.40 | 1.57 | | 0.107 | CN | 161075 |
| 25.40 | 2.39 | | 0.168 | CN | 161076 |
| 25.40 | 2.79 | | 0.196 | CN | 161077 |
| 25.40 | 3.18 | | 0.217 | CKN | 161079 |
| 25.40 | 3.18 | 1.19 | 0.220 | N | 161080 |
| 25.40 | 4.75 | | 0.332 | C | 161084 |
| 25.40 | 4.78 | 1.57 | 0.330 | CN | 161086 |
| 25.40 | 6.35 | | 0.436 | CN | 161088 |
| 25.40 | 12.70 | | 0.869 | CN | 161096 |
| 25.40 | 19.05 | | 1.305 | CN | 161101 |
| 28.58 | 3.18 | | | N | 161105 |
| 31.75 | 1.60 | | 0.141 | CN | 161111 |
| 31.75 | 2.36 | | 0.208 | CN | 161112 |
| 31.75 | 3.18 | | 0.277 | CN | 161113 |
| 31.75 | 4.75 | | 0.408 | C | 161114 |
| 31.75 | 6.35 | | 0.546 | CN | 161115 |
| 31.75 | 9.53 | | 0.816 | N | 161119 |
| 31.75 | 12.70 | | 1.115 | C | 161120 |
| 31.75 | 19.05 | | 1.633 | C | 161123 |
| 34.93 | 6.35 | | 0.589 | CK | 161129 |
| 34.93 | 25.40 | 0.79 | 2.454 | CN | 161131 |
| 38.10 | 1.60 | | 0.168 | CN | 161134 |

Rectangular Bar

Profils Rectangulaires



| <i>W</i> | <i>T</i> | <i>R</i> | <i>kg/m</i> | <i>Die Location</i> | <i>Bonnell Part #</i> |
|----------|----------|----------|-------------|---------------------|-----------------------|
| 38.10 | 3.18 | | 0.326 | CN | 161136 |
| 38.10 | 4.75 | | 0.485 | C | 161140 |
| 38.10 | 6.35 | | 0.667 | KN | 161142 |
| 38.10 | 9.53 | | 0.984 | C | 161147 |
| 38.10 | 12.70 | | 1.310 | CN | 161148 |
| 38.10 | 15.88 | | 1.673 | C | 161150 |
| 38.10 | 19.05 | | 1.960 | C | 161151 |
| 41.28 | 3.18 | | | C | 161156 |
| 44.45 | 3.18 | | 0.387 | C | 161163 |
| 44.45 | 6.35 | | 0.780 | N | 161165 |
| 44.45 | 9.53 | | 1.146 | CN | 161166 |
| 44.45 | 12.70 | | 1.561 | C | 161167 |
| 44.45 | 19.05 | | 2.280 | C | 161169 |
| 50.80 | 1.57 | | 0.222 | CK | 161173 |
| 50.80 | 2.39 | | 0.336 | N | 161174 |
| 50.80 | 3.18 | | 0.435 | CKN | 161176 |
| 50.80 | 4.75 | | 0.652 | CN | 161177 |
| 50.80 | 6.35 | | 0.871 | CKN | 161182 |
| 50.80 | 9.53 | | 1.310 | CKN | 161188 |
| 50.80 | 12.70 | | 1.741 | CN | 161191 |
| 50.80 | 12.70 | 1.91 | 1.777 | K | 161192 |
| 50.80 | 19.05 | | 2.677 | CN | 161196 |
| 50.80 | 25.40 | | 3.479 | CN | 161198 |
| 50.80 | 28.58 | | 4.018 | C | 161200 |
| 50.80 | 31.75 | | 4.350 | C | 161201 |
| 50.80 | 38.10 | | 5.219 | C | 161202 |
| 57.15 | 3.18 | | 0.502 | C | 161206 |
| 57.15 | 6.35 | | | C | 161208 |
| 57.15 | 15.88 | 3.18 | 2.488 | N | 161213 |
| 60.33 | 1.57 | | 0.262 | CN | 161219 |
| 60.33 | 4.78 | | 0.798 | C | 161220 |
| 63.50 | 3.18 | | 0.546 | N | 161227 |
| 63.50 | 6.35 | | 1.088 | CKN | 161230 |
| 63.50 | 9.53 | | 1.640 | C | 161233 |
| 63.50 | 19.05 | | 3.347 | C | 161237 |
| 69.85 | 6.35 | | 1.226 | K | 161248 |
| 76.20 | 2.36 | | | K | 161256 |
| 76.20 | 3.18 | | 0.653 | CN | 161257 |
| 76.20 | 4.75 | | 0.984 | C | 161259 |
| 76.20 | 6.35 | | 1.299 | CN | 161261 |
| 76.20 | 7.92 | | 1.624 | N | 161263 |
| 76.20 | 9.53 | | 1.958 | CKN | 161264 |
| 76.20 | 12.70 | | 2.609 | CN | 161266 |
| 76.20 | 19.05 | | 3.938 | C | 161270 |
| 76.20 | 38.10 | 1.57 | 8.030 | C | 161274 |
| 82.55 | 4.75 | | | C | 161280 |
| 82.55 | 6.35 | | 1.452 | C | 161281 |
| 85.73 | 4.78 | | 1.134 | N | 161283 |

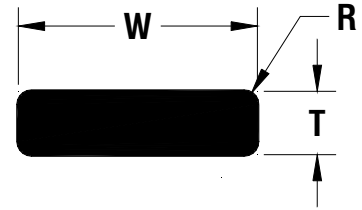
C = Carthage, Tn / K = Kentland, IN / N = Newnan, GA

Rectangular Bar Page 2

10-Aug-09

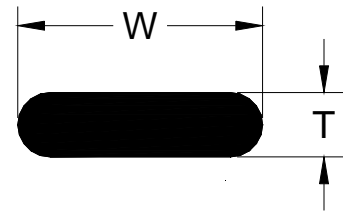
Rectangular Bar

Profils Rectangulaires



| <i>W</i> | <i>T</i> | <i>R</i> | <i>kg/m</i> | <i>Die Location</i> | <i>Bonnell Part #</i> |
|----------|----------|----------|-------------|---------------------|-----------------------|
| 88.90 | 3.18 | | 0.780 | N | 161286 |
| 88.90 | 19.05 | 0.79 | 4.686 | K | 161296 |
| 92.08 | 4.78 | | 1.217 | N | 161305 |
| 95.25 | 3.18 | | 0.838 | C | 161306 |
| 95.25 | 6.35 | | 1.676 | C | 161308 |
| 101.60 | 3.18 | | 0.871 | CN | 161314 |
| 101.60 | 6.35 | | 1.750 | CN | 161318 |
| 101.60 | 9.53 | | 2.624 | N | 161323 |
| 101.60 | 12.70 | | 3.479 | CN | 161325 |
| 101.60 | 15.88 | 3.18 | 4.441 | C | 161329 |
| 101.60 | 25.40 | | 6.968 | CN | 161332 |
| 101.60 | 25.40 | 0.79 | 7.142 | C | 161333 |
| 107.95 | 3.18 | | 0.948 | CN | 161344 |
| 114.30 | 3.18 | | 1.003 | C | 161347 |
| 114.30 | 6.35 | 1.57 | 2.003 | CN | 161349 |
| 127.00 | 6.35 | | 2.188 | CN | 161370 |
| 127.00 | 12.70 | | 4.351 | C | 161373 |
| 152.40 | 3.18 | | 1.305 | CN | 161395 |
| 152.40 | 6.35 | | 2.612 | CN | 161399 |
| 152.40 | 9.53 | | 3.942 | C | 161405 |
| 152.40 | 12.70 | | 5.244 | CN | 161406 |
| 152.40 | 15.88 | | 6.529 | C | 161407 |
| 160.32 | 6.35 | | 2.819 | CN | 161414 |
| 161.93 | 4.32 | | 1.936 | N | 161415 |
| 177.80 | 25.40 | 1.57 | 12.495 | C | 161428 |
| 203.20 | 3.18 | | 1.749 | C | 161439 |
| 203.20 | 6.35 | | 3.479 | C | 161441 |
| 228.60 | 9.53 | | 6.027 | C | 161451 |
| 254.00 | 6.35 | | 4.350 | C | 161456 |

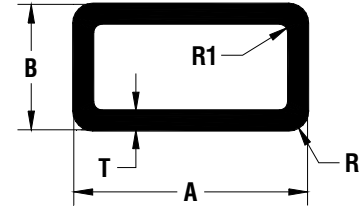
Rectangular Bar
Full Round Ends
Profilés Rectangulaires
Chants Ronds



| <i>W</i> | <i>T</i> | <i>kg/m</i> | <i>Die Location</i> | <i>Bonnell Part #</i> |
|----------|----------|-------------|---------------------|-----------------------|
| 15.88 | 1.57 | 0.068 | N | 162003 |
| 15.88 | 3.18 | | N | 162005 |
| 15.88 | 4.78 | 0.196 | CN | 162006 |
| 19.05 | 3.18 | 0.156 | N | 162007 |
| 19.05 | 4.75 | | CN | 162008 |
| 19.05 | 9.53 | 0.448 | N | 162010 |
| 25.40 | 1.57 | 0.109 | N | 162012 |
| 25.40 | 2.39 | 0.164 | N | 162013 |
| 25.40 | 3.18 | 0.210 | N | 162014 |
| 28.58 | 4.78 | 0.365 | C | 162019 |
| 38.10 | 12.70 | 1.243 | N | 162026 |
| 44.04 | 3.18 | 0.375 | N | 162031 |
| 50.80 | 6.35 | 0.847 | N | 162036 |
| 50.80 | 9.53 | 1.253 | KN | 162037 |
| 50.80 | 12.70 | 1.689 | CN | 162038 |
| 63.50 | 4.78 | 0.839 | C | 162042 |
| 76.20 | 1.57 | 0.330 | N | 162048 |
| 76.20 | 9.53 | 1.912 | N | 162052 |
| 88.90 | 12.70 | 3.028 | N | 162062 |
| 114.30 | 12.70 | 3.921 | N | 162082 |
| 158.75 | 1.78 | 0.778 | K | 162104 |

Rectangular Tubes

Tubes Rectangulaires



| <i>A</i> | <i>B</i> | <i>T</i> | <i>R</i> | <i>RI</i> | <i>kg/m</i> | <i>Die Location</i> | <i>Bonnell Part #</i> |
|----------|----------|----------|----------|-----------|-------------|---------------------|-----------------------|
| 25.40 | 12.70 | 1.57 | | | 0.305 | C | 172003 |
| 25.40 | 12.70 | 3.18 | | | 0.560 | C | 172006 |
| 25.40 | 19.05 | 3.18 | | | 0.670 | CN | 172008 |
| 38.10 | 19.05 | 1.27 | | | 0.384 | C | 172012 |
| 38.10 | 19.05 | 2.36 | | | 0.686 | N | 172014 |
| 38.10 | 19.05 | 3.18 | | | 0.869 | CN | 172015 |
| 38.10 | 25.40 | 1.57 | | | 0.530 | CN | 172016 |
| 38.10 | 25.40 | 3.18 | | | 1.003 | CN | 172019 |
| 44.45 | 25.40 | 1.57 | | | 0.582 | C | 172023 |
| 44.45 | 25.40 | 2.39 | | | 0.860 | CN | 172024 |
| 47.63 | 31.75 | 1.57 | | | 0.664 | C | 172026 |
| 50.80 | 25.40 | 1.57 | | | 0.631 | CKN | 172028 |
| 50.80 | 25.40 | 1.98 | | | 0.792 | CN | 172029 |
| 50.80 | 25.40 | 2.36 | | | 0.935 | N | 172030 |
| 50.80 | 25.40 | 3.18 | | | 1.198 | CKN | 172032 |
| 50.80 | 38.10 | 3.18 | | | 1.452 | CN | 172040 |
| 50.80 | 44.45 | 3.18 | | | 1.563 | C | 172041 |
| 57.15 | 25.40 | 1.57 | | | 0.693 | N | 172043 |
| 57.15 | 44.45 | 3.18 | | | 1.676 | C | 172044 |
| 63.50 | 25.40 | 1.60 | | | 0.759 | C | 172046 |
| 63.50 | 31.75 | 1.42 | | | 0.729 | N | 172048 |
| 63.50 | 38.10 | 2.03 | | | 1.054 | C | 172050 |
| 63.50 | 38.10 | 3.18 | | | 1.673 | C | 172052 |
| 76.20 | 25.40 | 2.39 | | | 1.281 | C | 172056 |
| 76.20 | 25.40 | 2.59 | | | 1.383 | N | 172057 |
| 76.20 | 25.40 | 3.18 | | | 1.634 | CN | 172059 |
| 76.20 | 38.10 | 1.57 | | | 0.970 | C | 172061 |
| 76.20 | 38.10 | 3.18 | | | 1.899 | CN | 172063 |
| 76.20 | 44.45 | 1.57 | | | 1.153 | C | 172067 |
| 76.20 | 44.45 | 2.39 | | | 1.533 | C | 172068 |
| 76.20 | 44.45 | 2.59 | | | 1.655 | CN | 172069 |
| 76.20 | 44.45 | 3.18 | | | 2.009 | CN | 172071 |
| 76.20 | 50.80 | 2.59 | | | 1.747 | CN | 172072 |
| 76.20 | 50.80 | 3.18 | | | 2.119 | CN | 172074 |
| 76.20 | 50.80 | 6.35 | | | 3.908 | C | 172076 |
| 76.20 | 63.50 | 2.54 | | | 1.887 | C | 172077 |
| 88.90 | 44.45 | 3.18 | | | 2.232 | C | 172081 |
| 101.60 | 25.40 | 2.29 | | | 1.551 | C | 172083 |
| 101.60 | 25.40 | 3.18 | | | 2.121 | CN | 172085 |
| 101.60 | 38.10 | 2.39 | | | 1.784 | C | 172088 |
| 101.60 | 38.10 | 4.57 | | | 3.304 | C | 172090 |
| 101.60 | 44.45 | 1.57 | | | 1.247 | CN | 172091 |
| 101.60 | 44.45 | 1.83 | | | 1.442 | CN | 172092 |
| 101.60 | 44.45 | 2.29 | | | 1.749 | CN | 172093 |
| 101.60 | 44.45 | 2.54 | | | 1.941 | CN | 172094 |
| 101.60 | 44.45 | 3.18 | | | 2.399 | CN | 172096 |
| 101.60 | 50.80 | 3.18 | | | 2.499 | CN | 172099 |
| 101.60 | 76.20 | 3.18 | | | 3.015 | C | 172103 |

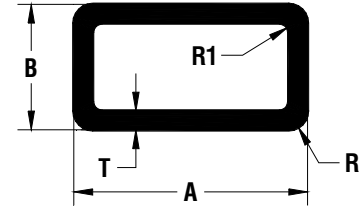
C = Carthage, Tn / K = Kentland, IN / N = Newnan, GA

Rectangular Tubes Page 1

10-Aug-09

Rectangular Tubes

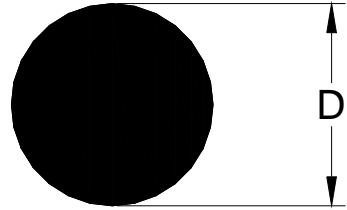
Tubes Rectangulaires



| <i>A</i> | <i>B</i> | <i>T</i> | <i>R</i> | <i>RI</i> | <i>kg/m</i> | <i>Die Location</i> | <i>Bonnell Part #</i> |
|----------|----------|----------|----------|-----------|-------------|---------------------|-----------------------|
| 101.60 | 76.20 | 3.18 | 3.18 | 1.57 | 2.994 | C | 172104 |
| 114.30 | 44.45 | 2.39 | | | 2.036 | CN | 172109 |
| 114.30 | 44.45 | 3.18 | | | 2.679 | CN | 172110 |
| 114.30 | 50.80 | 2.39 | | | 2.119 | C | 172111 |
| 114.30 | 50.80 | 3.18 | | | 2.792 | K | 172112 |
| 127.00 | 44.45 | 3.18 | | | 2.829 | CN | 172114 |
| 127.00 | 50.80 | 2.36 | | | 2.262 | CKN | 172115 |
| 127.00 | 50.80 | 3.18 | | | 3.018 | CN | 172116 |
| 127.00 | 63.50 | 3.18 | | 2.39 | 3.250 | C | 172120 |
| 127.00 | 76.20 | 3.18 | | | 3.369 | C | 172122 |
| 139.70 | 63.50 | 3.18 | | | 3.461 | C | 172123 |
| 152.40 | 44.45 | 3.18 | | | 3.269 | C | 172126 |
| 152.40 | 50.80 | 2.29 | | | 2.515 | C | 172127 |
| 152.40 | 50.80 | 3.18 | | | 3.461 | C | 172129 |
| 152.40 | 63.50 | 3.18 | | | 3.682 | C | 172131 |
| 152.40 | 76.20 | 3.18 | 3.18 | 3.18 | 3.908 | C | 172132 |
| 152.40 | 101.60 | 3.81 | 3.18 | 1.57 | 5.179 | C | 172134 |
| 177.80 | 50.80 | 3.18 | | | 3.908 | C | 172137 |
| 177.80 | 76.20 | 3.18 | | | 4.354 | C | 172138 |
| 203.20 | 50.80 | 3.18 | | | 4.351 | C | 172139 |

Round Rod

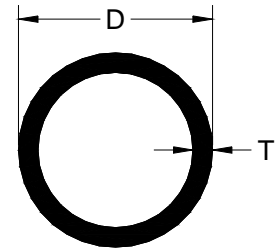
Barres Rondes



| <i>D</i> | <i>Tol +</i> | <i>Tol -</i> | <i>kg/m</i> | <i>Die Location</i> | <i>Bonnell Part #</i> |
|----------|--------------|--------------|-------------|---------------------|-----------------------|
| 7.92 | | | 0.132 | CKN | 181004 |
| 9.53 | | | 0.192 | CN | 181006 |
| 11.10 | | | 0.268 | C | 181009 |
| 12.70 | | | 0.341 | CN | 181010 |
| 15.88 | | | 0.536 | C | 181013 |
| 19.05 | | | 0.769 | CN | 181017 |
| 22.23 | | | 1.046 | C | 181022 |
| 25.40 | | | 1.368 | CN | 181029 |
| 31.75 | | | 2.146 | C | 181041 |
| 38.10 | | | 3.078 | CN | 181051 |
| 41.28 | | | 3.613 | CN | 181057 |

Round Tube

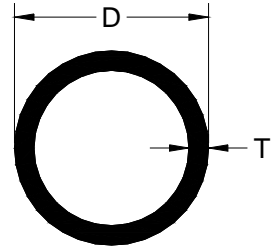
Tubes Ronds



| <i>D</i> | <i>T</i> | <i>kg/m</i> | <i>Die Location</i> | <i>Bonnell Part #</i> |
|----------|----------|-------------|---------------------|-----------------------|
| 9.50 | 1.57 | 0.106 | N | 152002 |
| 10.29 | 1.78 | 0.132 | N | 152005 |
| 15.88 | 1.27 | 0.156 | CN | 152013 |
| 15.88 | 1.65 | 0.198 | CN | 152016 |
| 16.89 | 2.31 | 0.293 | KN | 152021 |
| 16.94 | 2.26 | 0.292 | C | 152022 |
| 19.05 | 1.24 | 0.188 | CN | 152028 |
| 19.05 | 1.65 | 0.240 | CN | 152033 |
| 19.05 | 2.16 | 0.318 | N | 152034 |
| 19.05 | 2.84 | 0.402 | N | 152036 |
| 19.05 | 4.78 | 0.592 | N | 152039 |
| 22.20 | 1.47 | 0.266 | N | 152055 |
| 22.23 | 1.24 | 0.220 | CN | 152056 |
| 22.23 | 1.65 | 0.287 | CN | 152058 |
| 25.40 | 1.24 | 0.260 | CKN | 152068 |
| 25.40 | 1.57 | 0.327 | N | 152070 |
| 25.40 | 1.65 | 0.333 | CKN | 152071 |
| 25.40 | 2.16 | 0.436 | CN | 152074 |
| 25.40 | 3.18 | 0.600 | CN | 152077 |
| 28.58 | 1.40 | 0.330 | KN | 152096 |
| 31.75 | 1.24 | 0.320 | CN | 152115 |
| 31.75 | 1.65 | 0.421 | CN | 152118 |
| 31.75 | 2.36 | 0.604 | K | 152123 |
| 34.93 | 1.27 | 0.356 | N | 152141 |
| 38.10 | 1.27 | 0.396 | CN | 152154 |
| 38.10 | 1.57 | 0.496 | CN | 152155 |
| 38.10 | 2.41 | 0.655 | CN | 152160 |
| 38.10 | 3.00 | 0.911 | C | 152162 |
| 38.10 | 3.18 | 0.939 | CN | 152164 |
| 41.28 | 3.18 | 1.052 | N | 152175 |
| 44.45 | 1.52 | 0.573 | N | 152188 |
| 44.45 | 1.65 | 0.598 | C | 152189 |
| 44.45 | 1.98 | 0.732 | C | 152191 |
| 48.01 | 1.52 | 0.616 | K | 152203 |
| 50.80 | 1.27 | 0.533 | N | 152217 |
| 50.80 | 1.65 | 0.686 | N | 152218 |
| 50.80 | 2.03 | 0.863 | C | 152220 |
| 50.80 | 3.18 | 1.277 | CN | 152225 |
| 50.80 | 4.78 | 1.911 | C | 152227 |
| 57.15 | 2.11 | 1.007 | CN | 152244 |
| 60.33 | 3.81 | 1.874 | C | 152256 |
| 63.50 | 1.65 | 0.865 | N | 152267 |
| 63.50 | 2.54 | 1.310 | N | 152270 |
| 63.50 | 3.18 | 1.619 | CN | 152273 |
| 76.20 | 1.27 | 0.826 | CN | 152301 |
| 76.20 | 1.57 | 1.021 | CN | 152302 |
| 76.20 | 3.18 | 1.988 | CN | 152306 |
| 76.20 | 4.78 | 2.890 | C | 152309 |

Round Tube

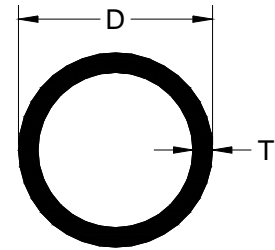
Tubes Ronds



| <i>D</i> | <i>T</i> | <i>kg/m</i> | <i>Die Location</i> | <i>Bonnell Part #</i> |
|----------|----------|-------------|---------------------|-----------------------|
| 88.90 | 3.18 | 2.319 | C | 152324 |
| 88.90 | 3.96 | 2.927 | C | 152329 |
| 88.90 | 5.18 | 3.756 | N | 152332 |
| 101.60 | 3.18 | 2.650 | CN | 152348 |
| 101.60 | 3.96 | 3.280 | C | 152351 |
| 101.60 | 5.41 | 4.525 | N | 152354 |
| 114.30 | 5.89 | 5.555 | C | 152368 |

Schedule Pipe

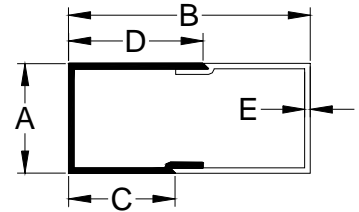
Tuyaux



| <i>D</i> | <i>T</i> | <i>Nom Dia</i> | <i>Sched</i> | <i>kg/m</i> | <i>Die Location</i> | <i>Bonnell Part #</i> |
|----------|----------|----------------|--------------|-------------|---------------------|-----------------------|
| 17.15 | 2.31 | 0.38 | 40 | 0.289 | N | 151002 |
| 21.34 | 2.77 | 0.50 | 40 | 0.438 | CN | 151005 |
| 26.67 | 2.87 | 0.75 | 40 | 0.583 | CN | 151007 |
| 33.40 | 3.38 | 1.00 | 40 | 0.865 | CN | 151009 |
| 33.40 | 4.55 | 1.00 | 80 | 1.118 | N | 151010 |
| 42.16 | 2.77 | 1.25 | 10 | 0.929 | C | 151012 |
| 42.16 | 3.56 | 1.25 | 40 | 1.171 | CKN | 151013 |
| 42.16 | 4.85 | 1.25 | 80 | 1.542 | N | 151014 |
| 48.26 | 2.77 | 1.50 | 10 | 1.073 | CN | 151016 |
| 48.26 | 3.68 | 1.50 | 40 | 1.399 | CKN | 151017 |
| 48.26 | 5.08 | 1.50 | 80 | 1.869 | C | 151018 |
| 60.33 | 2.77 | 2.00 | 10 | 1.359 | KN | 151020 |
| 60.33 | 3.91 | 2.00 | 40 | 1.881 | CN | 151021 |
| 60.33 | 5.54 | 2.00 | 80 | 2.585 | C | 151022 |
| 73.03 | 5.16 | 2.50 | 40 | 2.982 | CN | 151024 |
| 88.90 | 3.05 | 3.00 | 10 | 2.229 | N | 151027 |
| 88.90 | 5.49 | 3.00 | 40 | 3.899 | CN | 151028 |
| 101.60 | 2.11 | 3.50 | 5 | 1.787 | C | 151030 |
| 101.60 | 5.74 | 3.50 | 40 | 4.691 | C | 151031 |
| 114.30 | 2.11 | 4.00 | 5 | 2.016 | C | 151033 |
| 114.30 | 3.05 | 4.00 | 10 | 2.890 | C | 151034 |
| 141.30 | 6.55 | 5.00 | 40 | 7.526 | C | 151038 |
| 168.28 | 3.40 | 6.00 | 10 | 4.783 | C | 151040 |

Split Tubes

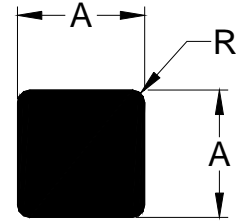
Profilés pour Emboîtements



| <i>A</i> | <i>B</i> | <i>C</i> | <i>D</i> | <i>E</i> | <i>kg/m</i> | <i>Die Location</i> | <i>Bonnell Part #</i> |
|----------|----------|----------|----------|----------|-------------|---------------------|-----------------------|
| 50.80 | 101.60 | 25.40 | 25.40 | 3.18 | 1.423 | N | 173002 |
| 50.80 | 101.60 | 44.45 | 57.15 | 1.57 | 0.845 | C | 173003 |
| 63.50 | 139.70 | 61.90 | 77.80 | 3.18 | 1.976 | N | 173004 |
| 69.85 | 139.70 | 63.50 | 76.20 | 3.18 | 1.976 | N | 173005 |
| 69.85 | 190.50 | 87.33 | 103.17 | 3.18 | 2.418 | N | 173006 |
| 69.85 | 241.30 | 112.70 | 128.57 | 3.18 | 2.750 | C | 173007 |
| 76.20 | 152.40 | 69.85 | 82.55 | 2.54 | 1.694 | C | 173009 |
| 76.20 | 190.50 | 88.90 | 101.60 | 2.79 | 2.152 | N | 173010 |
| 76.20 | 304.80 | 146.05 | 158.75 | 3.00 | 3.232 | C | 173011 |
| 101.60 | 100.03 | 42.88 | 57.15 | 3.18 | 1.897 | N | 173012 |
| 101.60 | 127.00 | 57.15 | 69.85 | 3.18 | 2.234 | N | 173014 |
| 114.30 | 114.30 | 50.80 | 63.50 | 3.18 | 2.119 | CN | 173016 |
| 127.00 | 127.00 | 50.80 | 76.20 | 3.18 | 2.316 | C | 173017 |
| 152.40 | 152.40 | 69.85 | 82.55 | 3.18 | 2.786 | CN | 173019 |

Square Bar

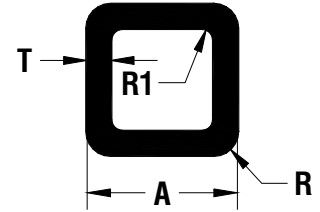
Barres Carrés



| <i>A</i> | <i>R</i> | <i>kg/m</i> | <i>Die Location</i> | <i>Bonnell Part #</i> |
|----------|----------|-------------|---------------------|-----------------------|
| 7.92 | | 0.173 | CN | 163003 |
| 11.13 | | 0.342 | N | 163005 |
| 12.70 | | 0.435 | CKN | 163007 |
| 15.88 | 1.57 | 0.691 | CN | 163010 |
| 19.05 | | 0.979 | C | 163011 |
| 25.40 | | 1.741 | CN | 163013 |
| 31.75 | | 2.732 | C | 163016 |
| 38.10 | | 3.929 | C | 163018 |
| 50.80 | 6.35 | 7.046 | N | 163021 |
| 76.20 | | 16.069 | C | 163025 |

Square Tubes

Tubes Carrés



| A | T | R | RI | kg/m | Die Location | Bonnell Part # |
|-------|------|-------|------|-------|--------------|----------------|
| 12.70 | 1.27 | | | 0.155 | CKN | 171001 |
| 12.70 | 1.57 | | | 0.195 | CN | 171002 |
| 15.88 | 1.57 | | | 0.250 | N | 171007 |
| 15.88 | 1.57 | 1.57 | | 0.243 | N | 171008 |
| 19.05 | 1.27 | | | 0.247 | CN | 171015 |
| 19.05 | 1.57 | | | 0.296 | CKN | 171016 |
| 19.05 | 1.73 | 1.57 | | 0.332 | N | 171020 |
| 19.05 | 3.18 | | | 0.560 | CN | 171023 |
| 22.23 | 1.27 | | | 0.295 | CN | 171025 |
| 22.23 | 2.39 | | | 0.525 | N | 171026 |
| 25.40 | 1.02 | | | 0.275 | C | 171027 |
| 25.40 | 1.12 | 3.18 | 2.06 | 0.283 | CN | 171029 |
| 25.40 | 1.27 | | | 0.324 | CN | 171031 |
| 25.40 | 1.40 | | | 0.362 | N | 171034 |
| 25.40 | 1.57 | | | 0.396 | CKN | 171036 |
| 25.40 | 2.36 | | | 0.588 | C | 171047 |
| 25.40 | 3.18 | | | 0.765 | CN | 171053 |
| 31.75 | 1.57 | | | 0.527 | CN | 171062 |
| 31.75 | 3.18 | | | 1.003 | CN | 171071 |
| 38.10 | 1.27 | | | 0.504 | CKN | 171073 |
| 38.10 | 1.57 | 0.79 | | 0.635 | CN | 171078 |
| 38.10 | 1.65 | 1.65 | | 0.667 | C | 171080 |
| 38.10 | 2.41 | | | 0.951 | C | 171082 |
| 38.10 | 2.97 | 3.18 | | 1.134 | C | 171084 |
| 38.10 | 3.18 | | | 1.199 | CN | 171088 |
| 38.10 | 3.18 | 0.79 | 0.79 | 1.226 | CN | 171089 |
| 38.10 | 6.15 | 3.18 | | 2.176 | K | 171094 |
| 38.10 | 6.35 | | | 2.232 | C | 171095 |
| 44.45 | 1.57 | | | 0.771 | CN | 171098 |
| 44.45 | 2.39 | | | 1.119 | CN | 171100 |
| 44.45 | 3.18 | | | 1.452 | CKN | 171104 |
| 50.80 | 1.52 | | | 0.832 | CN | 171107 |
| 50.80 | 2.36 | | | 1.266 | CN | 171109 |
| 50.80 | 2.67 | | | 1.421 | N | 171112 |
| 50.80 | 3.18 | | | 1.676 | CN | 171118 |
| 50.80 | 6.35 | | | 3.039 | C | 171124 |
| 63.50 | 1.91 | 0.64 | | 1.298 | N | 171128 |
| 63.50 | 3.18 | | | 2.122 | CN | 171133 |
| 63.50 | 4.78 | | | 3.104 | C | 171136 |
| 63.50 | 6.35 | | | 3.935 | C | 171137 |
| 76.20 | 1.98 | | | 1.628 | CKN | 171138 |
| 76.20 | 2.29 | 3.18 | 3.18 | 1.871 | C | 171139 |
| 76.20 | 3.18 | | | 2.569 | CKN | 171142 |
| 76.20 | 4.75 | | | 3.664 | N | 171145 |
| 76.20 | 5.56 | | | 4.350 | CN | 171148 |
| 76.20 | 6.35 | | | 4.789 | C | 171149 |
| 76.20 | 9.53 | 12.70 | 6.35 | 6.743 | N | 171153 |
| 88.90 | 2.29 | | | 2.194 | N | 171155 |

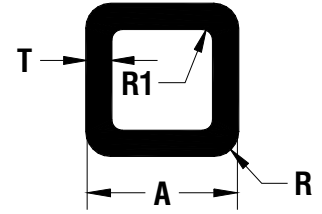
C = Carthage, Tn / K = Kentland, IN / N = Newnan, GA

Square Tubes Page 1

10-Aug-09

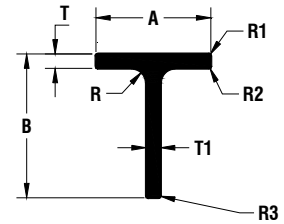
Square Tubes

Tubes Carrés



| <i>A</i> | <i>T</i> | <i>R</i> | <i>RI</i> | <i>kg/m</i> | <i>Die Location</i> | <i>Bonnell Part #</i> |
|----------|----------|----------|-----------|-------------|---------------------|-----------------------|
| 101.60 | 2.36 | | | 2.595 | C | 171158 |
| 101.60 | 3.18 | | | 3.380 | CN | 171159 |
| 101.60 | 3.18 | 3.18 | 3.18 | 3.461 | C | 171160 |
| 101.60 | 3.81 | 3.18 | 3.18 | 4.125 | C | 171164 |
| 101.60 | 4.78 | 6.35 | 1.57 | 5.028 | N | 171169 |
| 114.30 | 2.36 | | | 2.927 | C | 171175 |
| 114.30 | 3.18 | | | 3.810 | C | 171176 |
| 152.40 | 4.57 | 6.35 | 6.35 | 7.482 | C | 171182 |
| 152.40 | 4.78 | 1.57 | 3.18 | 7.823 | C | 171183 |

Tees
Miscellaneous
Profils En T
Divers



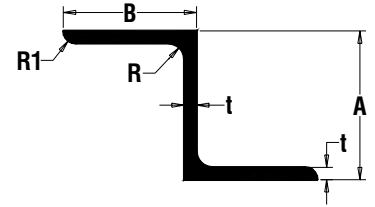
| <i>A</i> | <i>B</i> | <i>T</i> | <i>T1</i> | <i>R</i> | <i>R1</i> | <i>R2</i> | <i>R3</i> | <i>kg/m</i> | <i>Die Location</i> | <i>Bonnell Part #</i> |
|----------|----------|----------|-----------|----------|-----------|-----------|-----------|-------------|---------------------|-----------------------|
| 12.70 | 28.58 | 1.78 | 1.57 | | | | | 0.182 | C | 133001 |
| 19.05 | 19.05 | 3.18 | 3.18 | | | | | 0.307 | N | 133002 |
| 25.40 | 10.92 | 1.40 | 1.40 | | | | | 0.132 | C | 133006 |
| 25.40 | 25.40 | 3.18 | 3.18 | | | | | 0.399 | N | 133008 |
| 44.45 | 63.50 | 3.18 | 3.18 | | | | | 0.920 | C | 133026 |
| 50.80 | 19.05 | 3.18 | 3.18 | | | | | 0.580 | C | 133028 |
| 50.80 | 31.75 | 6.35 | 6.35 | | | | | 1.339 | N | 133030 |
| 50.80 | 50.80 | 6.35 | 6.35 | | | | | 1.673 | CN | 133035 |
| 50.80 | 69.85 | 3.18 | 3.81 | 6.35 | | | | 1.196 | C | 133040 |
| 57.15 | 95.25 | 6.35 | 6.35 | | | | | 2.569 | N | 133046 |
| 76.20 | 50.80 | 3.81 | 3.81 | | | | | 1.298 | K | 133054 |
| 80.98 | 50.80 | 4.78 | 4.78 | | | | | 1.679 | C | 133056 |
| 101.60 | 50.80 | 4.75 | 4.75 | | | | | 1.949 | C | 133060 |

Zees

American Standard

Profils En Z

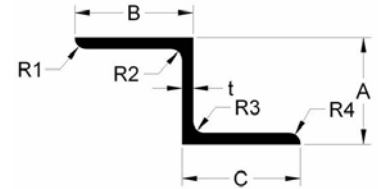
Modèle Americain



| <i>A</i> | <i>B</i> | <i>t</i> | <i>R</i> | <i>R1</i> | <i>kg/m</i> | <i>Die Location</i> | <i>Bonnell Part #</i> |
|----------|----------|----------|----------|-----------|-------------|---------------------|-----------------------|
| 76.20 | 68.28 | 6.35 | 7.92 | 6.35 | 3.472 | C | 141001 |
| 101.60 | 77.77 | 6.35 | 7.92 | 6.35 | 4.238 | N | 141003 |
| 103.17 | 79.38 | 7.92 | 7.92 | 6.35 | 5.320 | N | 141004 |

Zees

Miscellaneous



| <i>A</i> | <i>B</i> | <i>C</i> | <i>t</i> | <i>R1</i> | <i>R2</i> | <i>R3</i> | <i>R4</i> | <i>kg/m</i> | <i>Die Location</i> | <i>Bonnell Part #</i> |
|----------|----------|----------|----------|-----------|-----------|-----------|-----------|-------------|---------------------|-----------------------|
| 12.70 | 12.70 | 12.70 | 1.57 | 1.57 | 1.57 | | | 0.152 | N | 142001 |
| 19.05 | 31.75 | 25.40 | 3.18 | 3.18 | 3.18 | | | 0.615 | C | 142004 |
| 25.40 | 28.58 | 28.45 | 3.18 | 3.18 | 3.18 | | | 0.668 | N | 142008 |
| 27.79 | 38.10 | 23.83 | 2.39 | 2.39 | 2.39 | | | 0.561 | N | 142009 |
| 31.75 | 50.80 | 50.80 | 4.78 | 4.78 | 4.78 | 4.78 | 4.78 | 1.635 | C | 142010 |
| 57.15 | 31.75 | 31.75 | 6.35 | 6.35 | 6.35 | | | 1.896 | N | 142016 |
| 63.25 | 38.10 | 38.10 | 1.98 | 1.98 | 1.98 | | | 0.741 | K | 142019 |