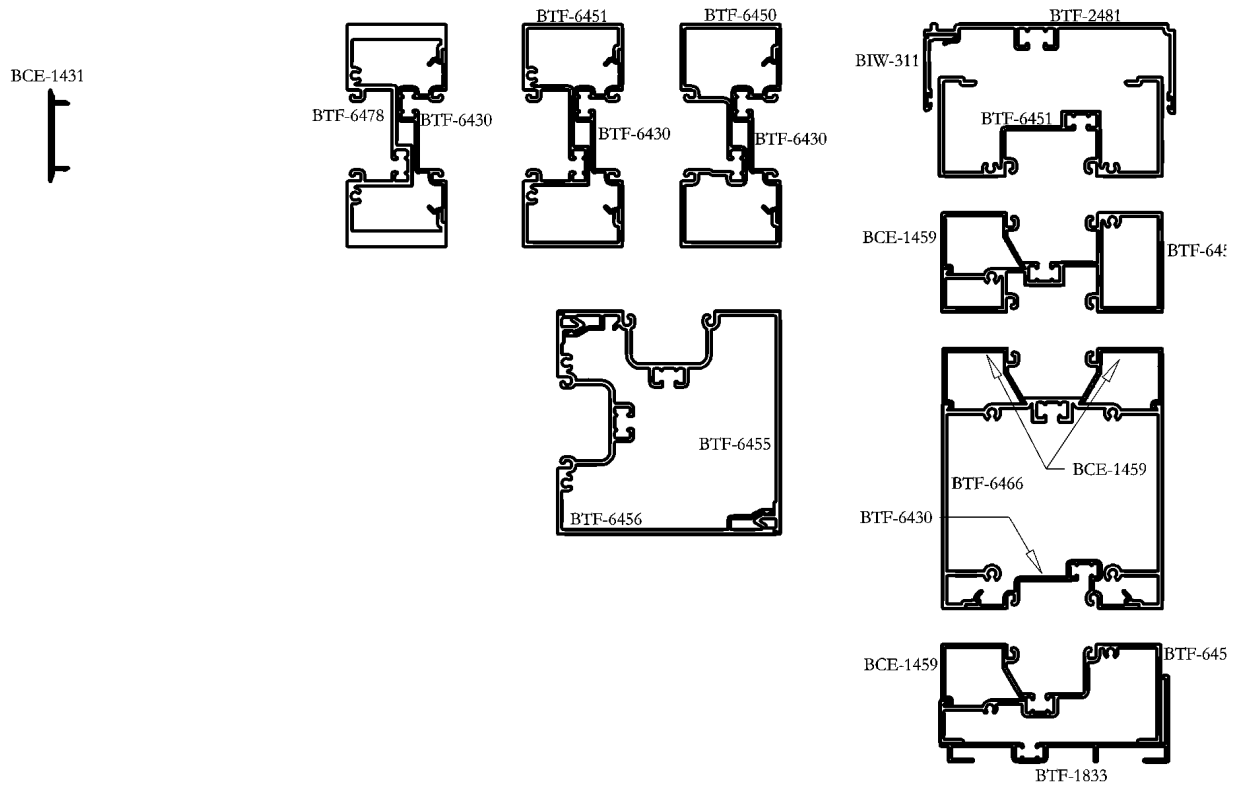


1/4 SIZE DETAILS



THIS SYSTEM IS DESIGNED TO BE ASSEMBLED WITH #10 SCREWS.

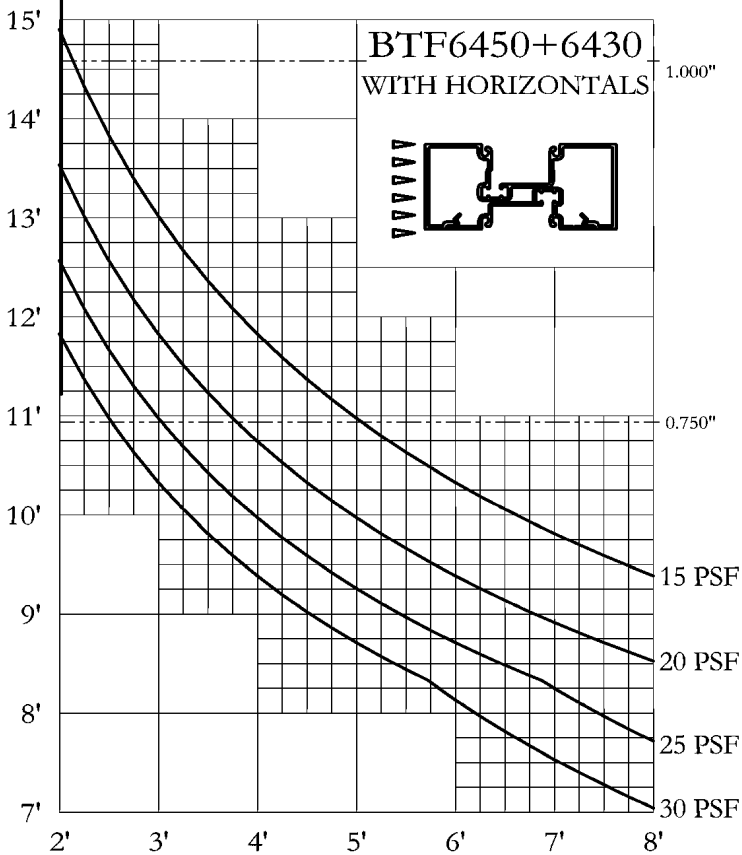
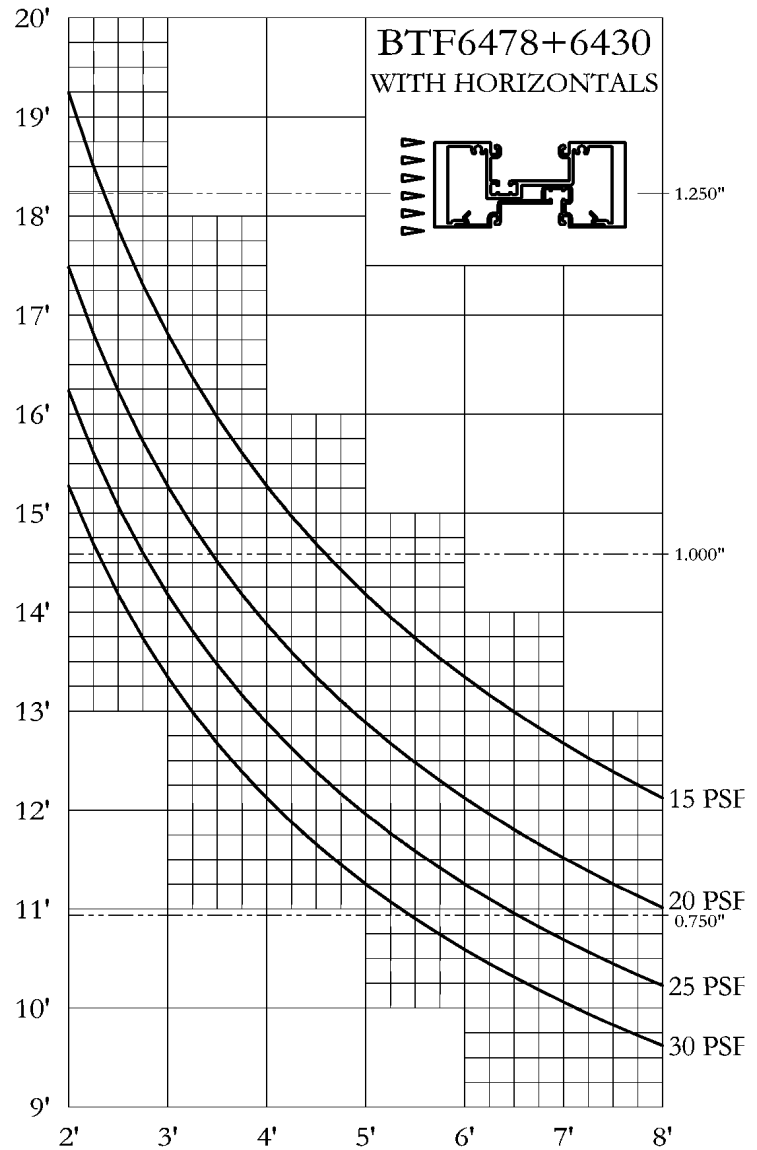
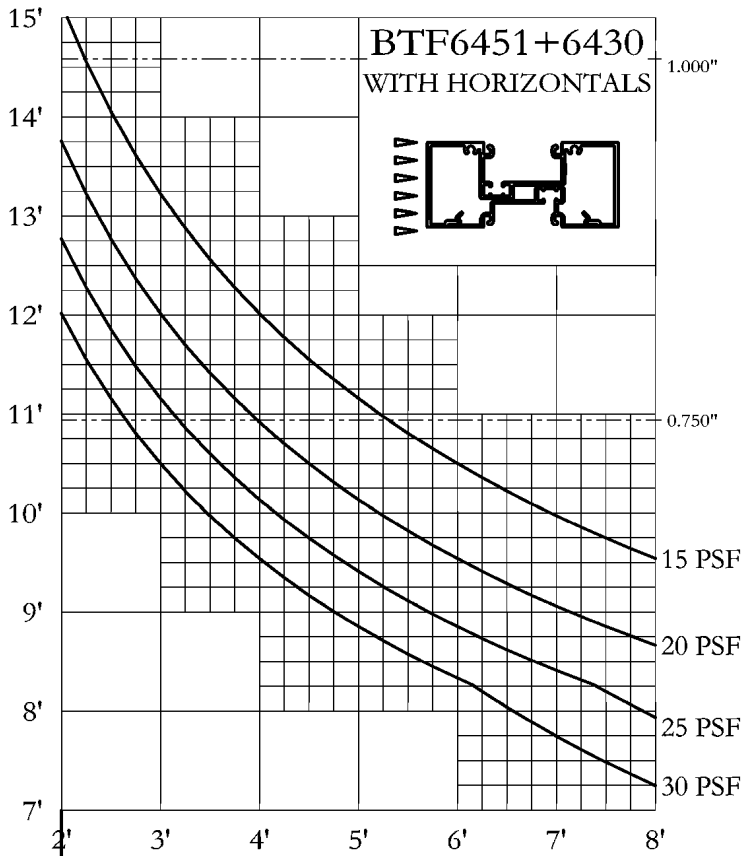
		<u>GASKETS</u>	
UNIVERSAL RUBBER CO 800-782-2375		#2028 #2090 #3239	1" GLASS, INT'R. & EXT'R. 5/8" GLASS IN 1 3/8" POCKET FOR PERIMETERS BTF-2481 AND BIW-311
REED RUBBER PRODUCTS 800-325-9698		#3734 #4893 #4006 #4007	GLAZING GASKET INT'R & EXT'R ALTERNATIVE PERIMETER WIPER GASKET (LIGHT) HEAD PERIMETER GASKET (HEAVY)
TREMCO 800-321-6357	TR-2062E		GLAZING GASKET INT'R & EXT'R

NO TEST DATA AVAILABLE
TREDEGAR EXTRUSIONS INC. DOES NOT MAKE ANY WARRANTY EXPRESS OR IMPLIED INCLUDING
NO WARRANTY OF MERCHANTABILITY OR FITNESS FOR A PARTICULAR PURPOSE AND RESERVES
THE RIGHT TO MAKE CHANGES
REPRODUCTION RIGHTS RESERVED

PRICING FACTORS
2 X 4 1/2 FLUSH GLAZED
BTF-6450 SERIES



WEIGHT PER FT	EST PER	FACTOR	CAVITY AREA	PART NUMBER	STRUCTURAL VALUES			1/8 SIZE DETAILS
					X-X	I	Y-Y	
0.540	13.874	26	BB	BTF6430	0.042	I	0.429	
					0.071	S	0.229	
1.285	26.502	21	BBS	BTF6450	0.459	I	2.828	
					0.393	S	1.225	
1.399	28.134	20	BBS	BTF6451	0.492	I	2.988	
					0.408	S	1.305	
1.498	28.665	19	CC	BTF6455	2.176	I	2.580	
					0.686	S	0.874	
1.592	29.519	19	CC	BTF6456	2.769	I	2.238	
					0.962	S	0.684	
1.015	21.854	22	CCS	BTF6457	0.303	I	1.907	
					0.301	S	0.760	
1.495	19.887	20	CC	BTF6458	0.476	I	2.401	
					0.399	S	0.980	
0.325	8.543	26	N/A	BCE1459	0.039	I	0.100	
					0.047	S	0.110	
2.072	37.887	18	CC	BTF6466	4.117	I	5.247	
					1.693	S	2.365	
0.653	17.626	27	BBS	BTF1833	0.077	I	1.311	
					0.056	S	0.493	
2.549	26.986	11	BBS	BTF6478	0.777	I	6.587	
					0.689	S	2.894	
0.907	18.071	20	DD	BTF2481	0.131	I	2.046	
					0.086	S	0.713	
0.221	4.608	21	N/A	BIW311	0.004	I	0.043	
					0.008	S	0.045	
0.163	4.938	30	N/A	BCE1431	0.001	I	0.040	
					0.003	S	0.043	



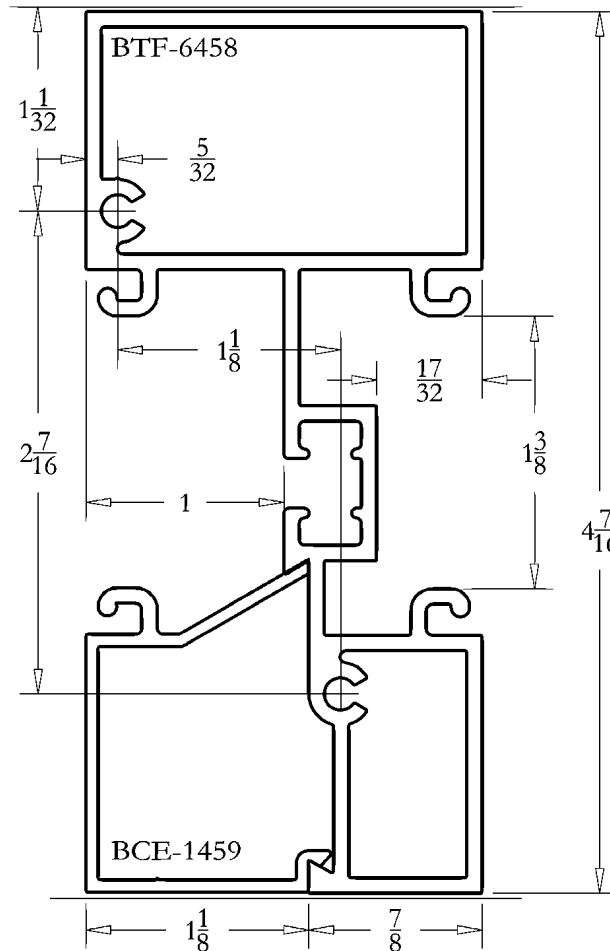
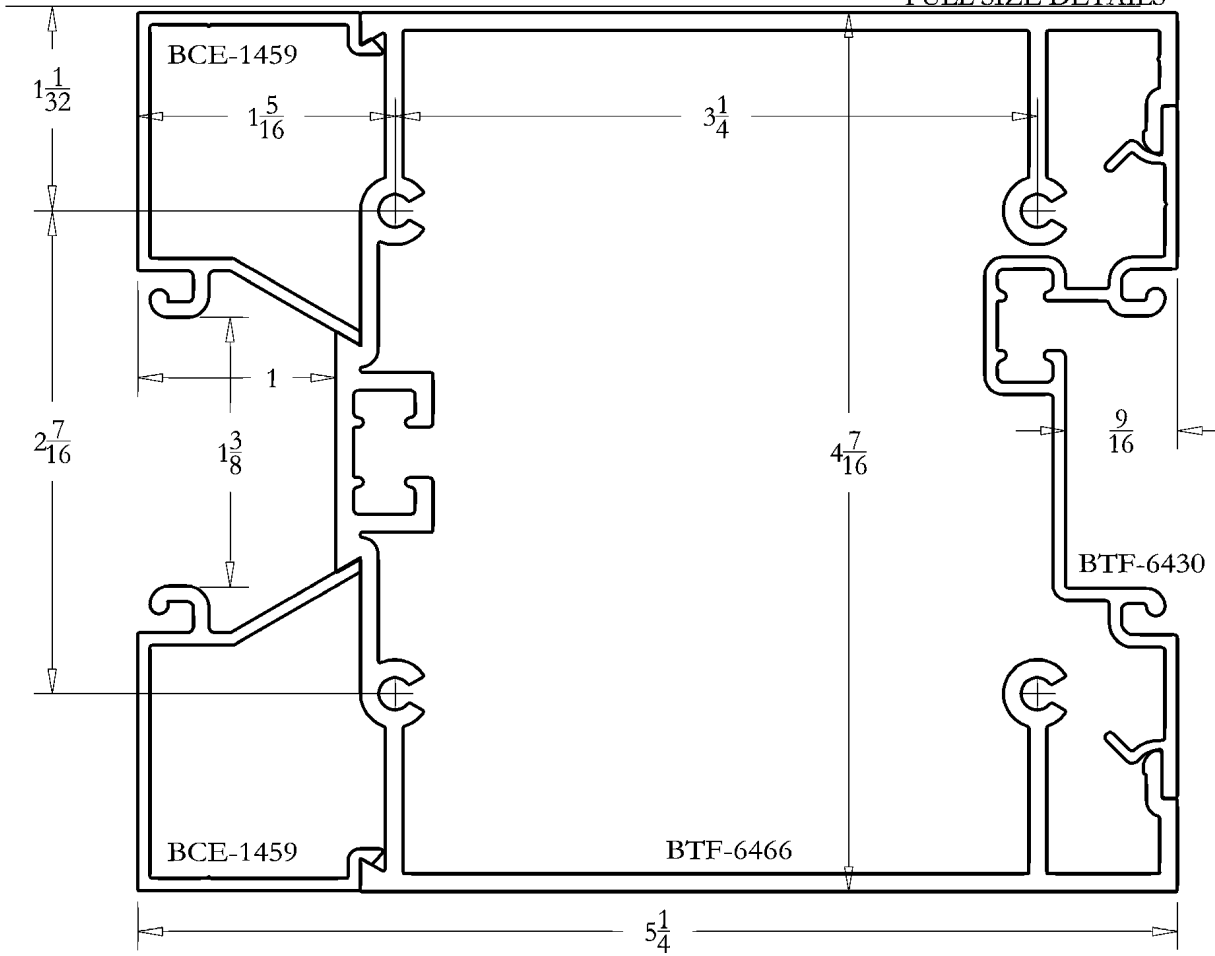
#1 THESE WINDLOAD CHARTS ARE BASED UPON THE LESSER OF DEFLECTION RATIO (L/175) OR STRESS (12667)

#2 THESE STRUCTURAL CURVES ARE ESTIMATES AND ARE PRESENTED TO THE BEST KNOWLEDGE OF THE WILLIAM L BONNELL CO. IT IS, HOWEVER, THE RESPONSIBILITY OF THE CUSTOMER TO BE SATISFIED THAT THE CURVES ARE CORRECT. THE WILLIAM L BONNELL CO. MAY NOT BE HELD RESPONSIBLE IN ANY WAY FOR THE FAILURE OF PERFORMANCE RESULTING FROM THE USE OF THESE CURVES.

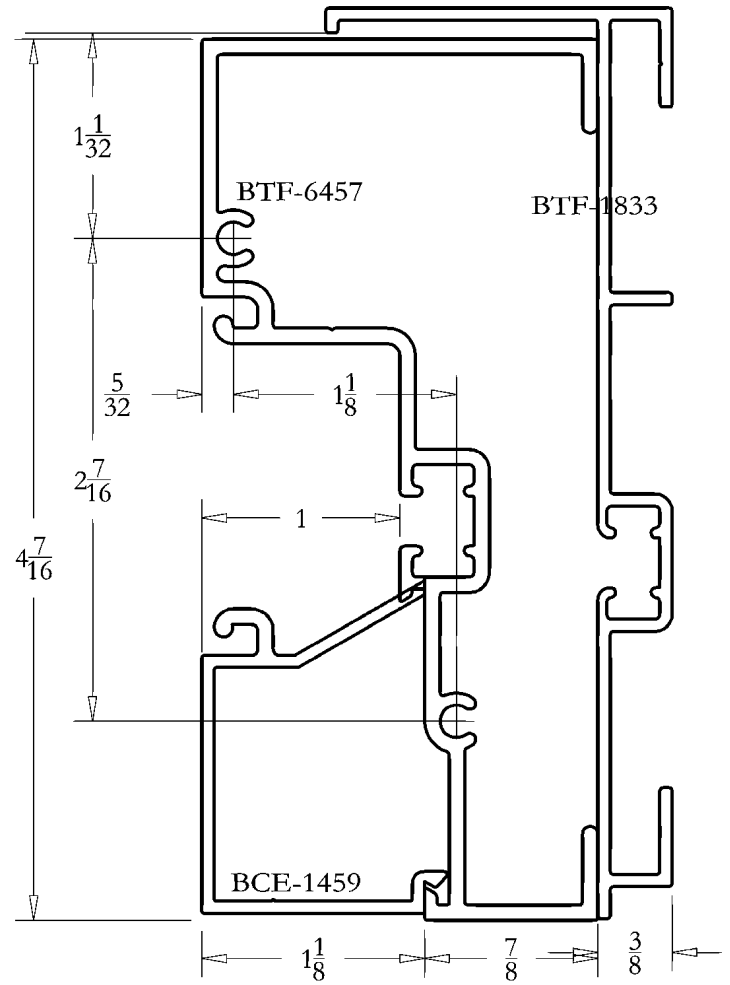
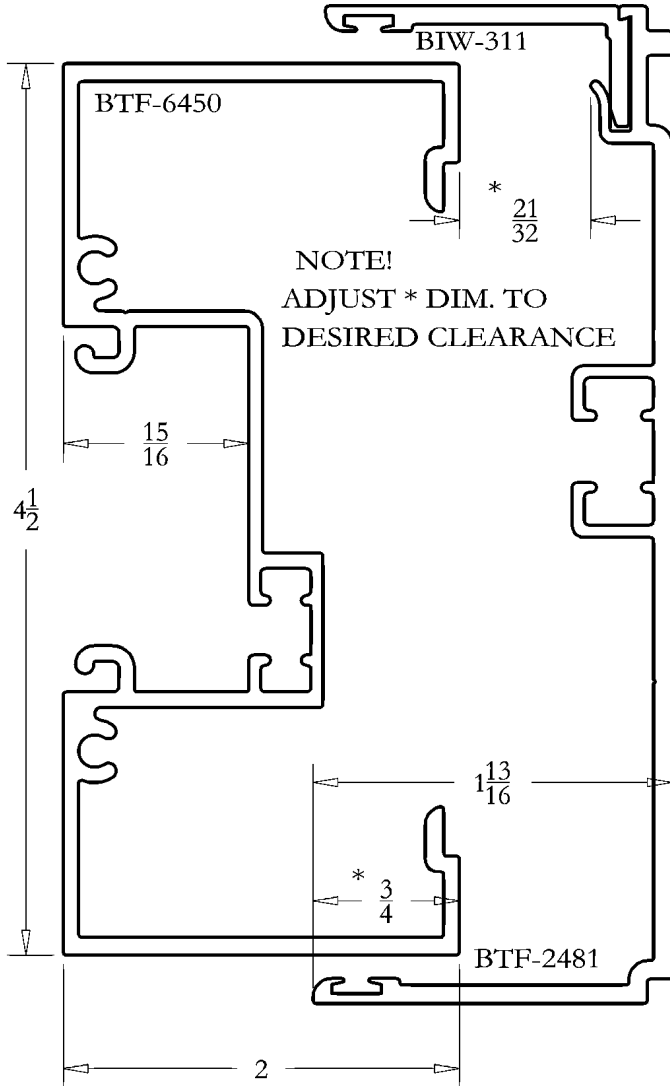
DETAIL SHEET
2 X 4 1/2 FLUSH GLAZED
BTF-6450 SERIES



FULL SIZE DETAILS



FULL SIZE DETAILS



DETAIL SHEET
2 X 4 1/2 FLUSH GLAZED
BTF-6450 SERIES



FULL SIZE DETAILS

