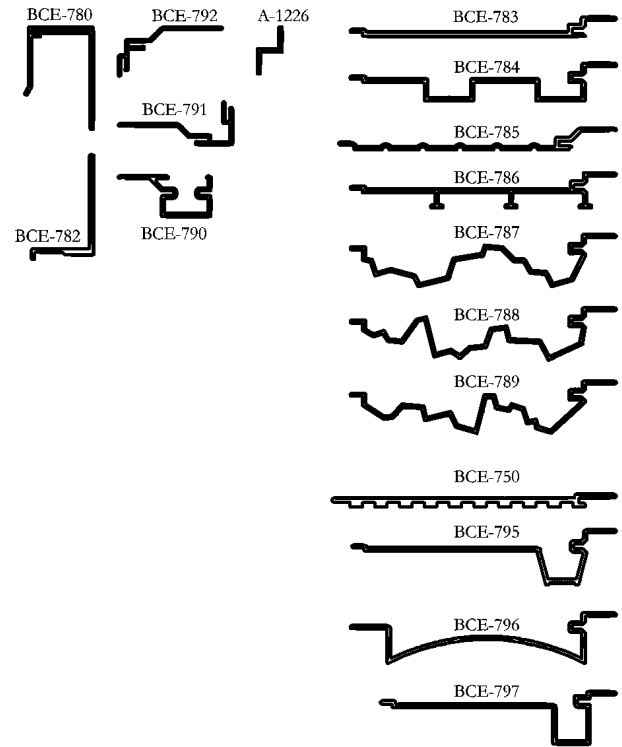


1/4 SIZE DETAILS



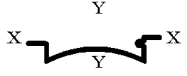
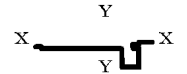

INSTALL FACING TO ALLOW FOR THERMAL EXPANSION.  
 ALLOW .006" CLEAR SPACE BETWEEN EACH PIECE (I.E. .062" PER 4 FOOT INCREMENT.)  
 THIS WILL ALLOW FOR 100 DEGREES IN TEMPERATURE VARIATION.

NO TEST DATA AVAILABLE  
 TREDEGAR EXTRUSIONS INC. DOES NOT MAKE ANY WARRANTY EXPRESS OR IMPLIED INCLUDING  
 NO WARRANTY OF MERCHANTABILITY OR FITNESS FOR A PARTICULAR PURPOSE AND RESERVES  
 THE RIGHT TO MAKE CHANGES  
 REPRODUCTION RIGHTS RESERVED

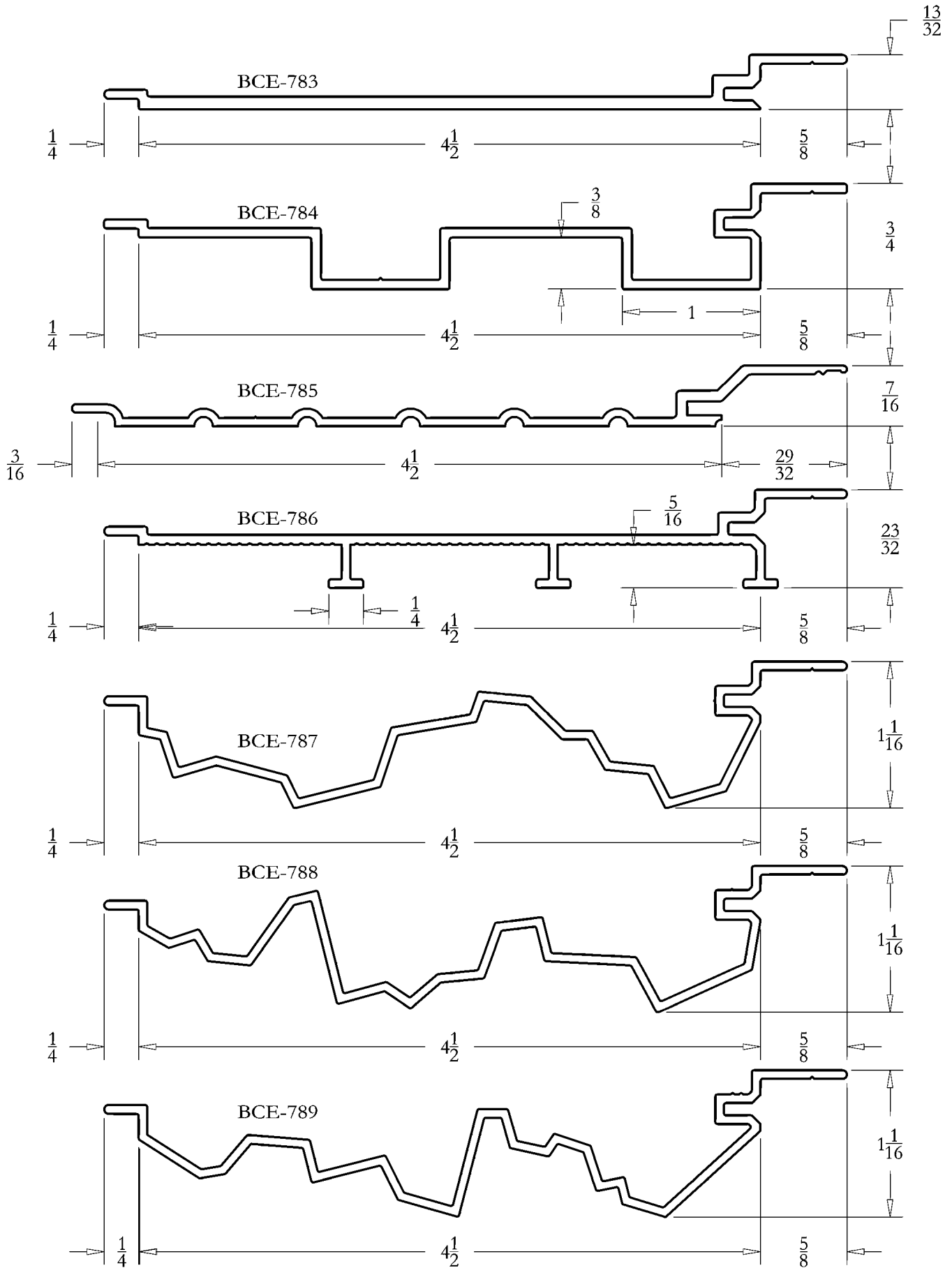
PRICING FACTORS  
FACINGS  
BCE-780 SERIES



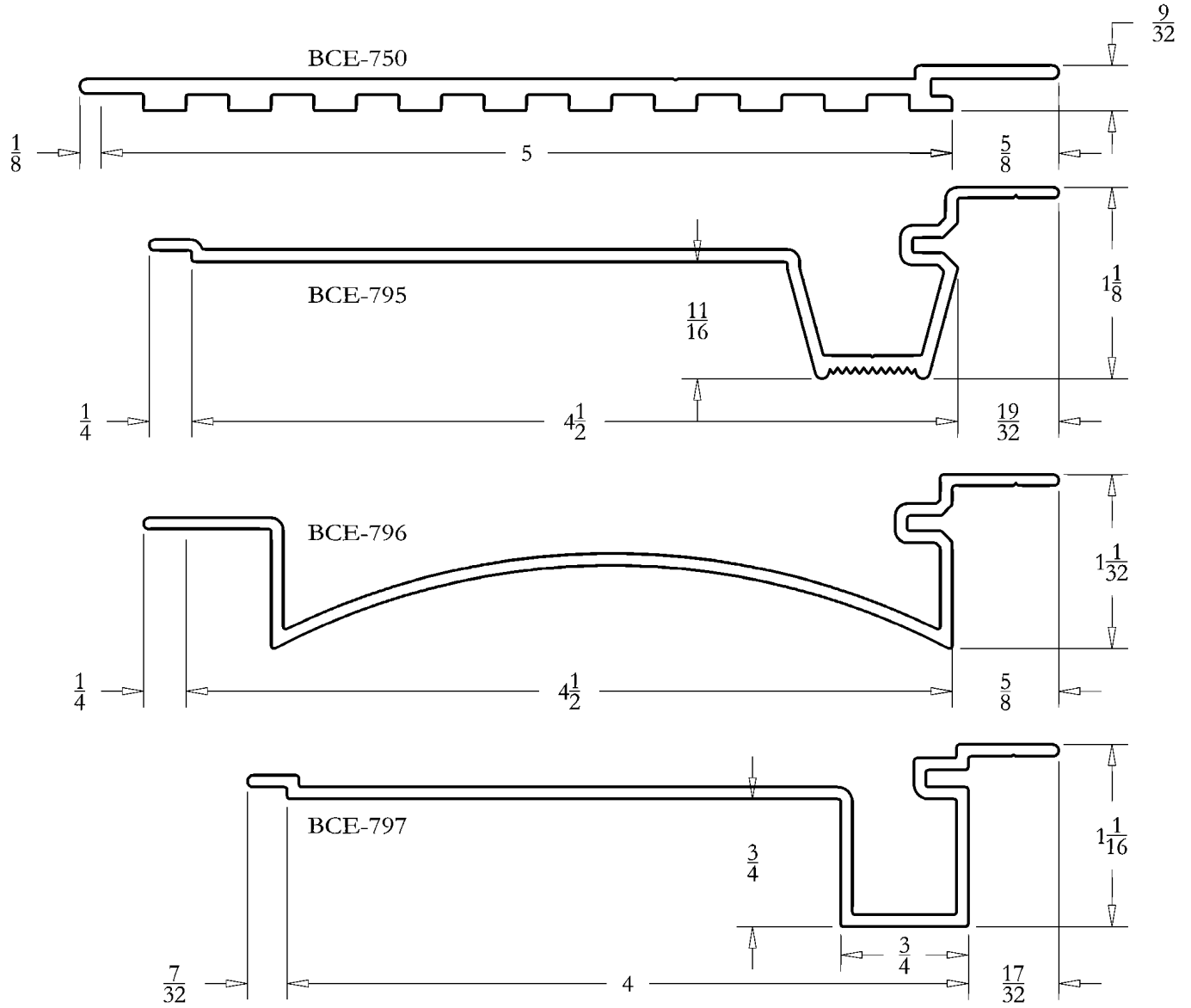
WEIGHT PER FT	EST PER	FACTOR	CAVITY AREA	PART NUMBER	STRUCTURAL VALUES			1/8 SIZE DETAILS
					X-X	Y-Y		
0.919	13.705	15	N/A	BCE750	0.003	I	1.899	
					0.021	S	0.648	
0.236	6.459	27	N/A	BCE780	0.027	I	0.084	
					0.027	S	0.062	
0.209	5.676	27	N/A	BCE781	0.032	I	0.028	
					0.032	S	0.028	
0.330	6.765	21	N/A	BCE782	0.040	I	0.114	
					0.042	S	0.079	
0.619	11.979	19	N/A	BCE783	0.005	I	1.204	
					0.016	S	0.435	
0.630	15.464	25	N/A	BCE784	0.025	I	1.222	
					0.056	S	0.417	
0.482	13.061	27	N/A	BCE785	0.006	I	1.035	
					0.018	S	0.351	
0.600	15.244	25	N/A	BCE786	0.012	I	1.165	
					0.033	S	0.400	
0.589	15.808	27	N/A	BCE787	0.042	I	1.248	
					0.075	S	0.439	
0.628	16.805	27	N/A	BCE788	0.039	I	1.256	
					0.070	S	0.450	
0.622	16.633	27	N/A	BCE789	0.038	I	1.186	
					0.067	S	0.419	
0.332	8.967	27	N/A	BCE790	0.023	I	0.069	
					0.053	S	0.058	
0.246	8.106	33	N/A	BCE791	0.009	I	0.099	
					0.016	S	0.064	
0.211	6.995	33	N/A	BCE792	0.014	I	0.071	
					0.020	S	0.051	
0.628	14.787	24	N/A	BCE795	0.041	I	1.213	
					0.065	S	0.390	

WEIGHT PER FT	EST PER	FACTOR	CAVITY AREA	PART NUMBER	STRUCTURAL VALUES			1/8 SIZE DETAILS
					X-X		Y-Y	
0.628	15.148	24	N/A	BCE796	0.034	I	1.407	
					0.065	S	0.488	
0.582	14.055	24	N/A	BCE797	0.043	I	0.910	
					0.065	S	0.320	
0.102	2.876	28	N/A	A1226	0.003	I	0.004	
					0.012	S	0.009	

FULL SIZE DETAILS



FULL SIZE DETAILS



DETAIL SHEET  
FACINGS  
BCE-780

FULL SIZE DETAILS

